

APPLICATION NOTE



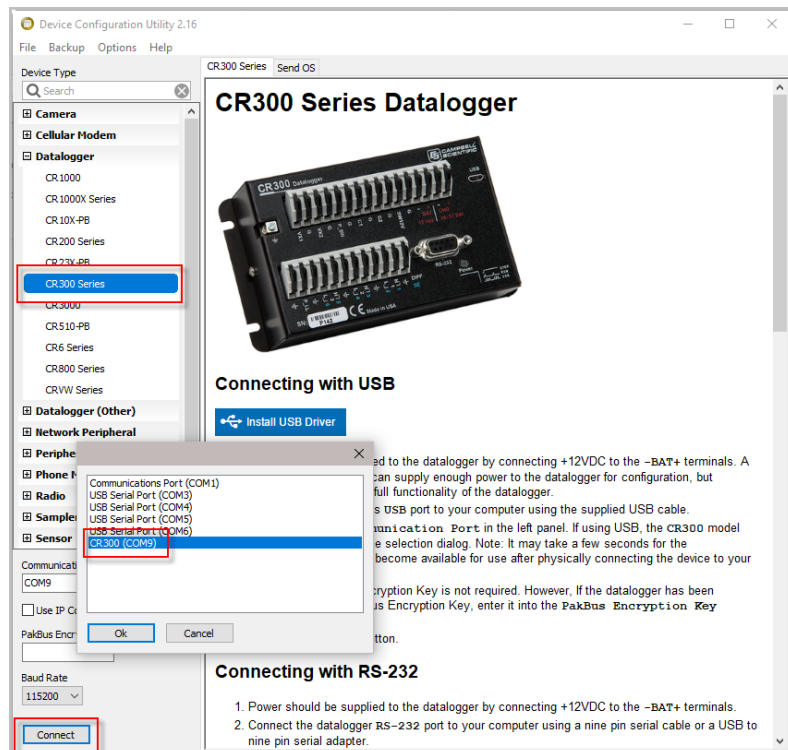
**CR300-Series-WiFi Daughter
Board OS Update Procedure**

Revision: 6/19

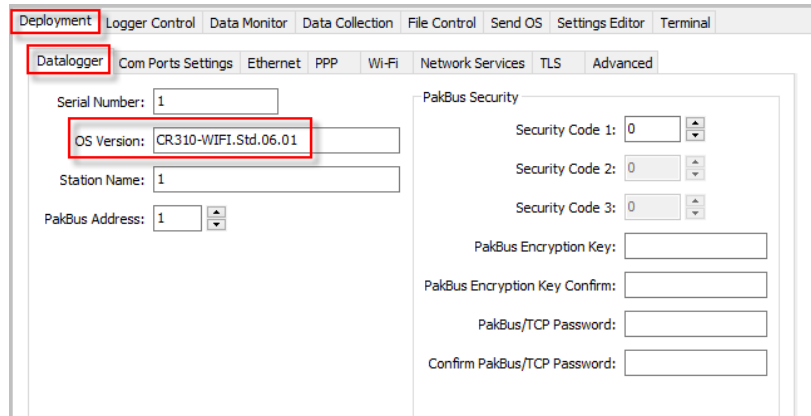
CR300-Series-WiFi Daughter Board OS Update Procedure

This procedure updates the CR300-series-WiFi daughter board OS.

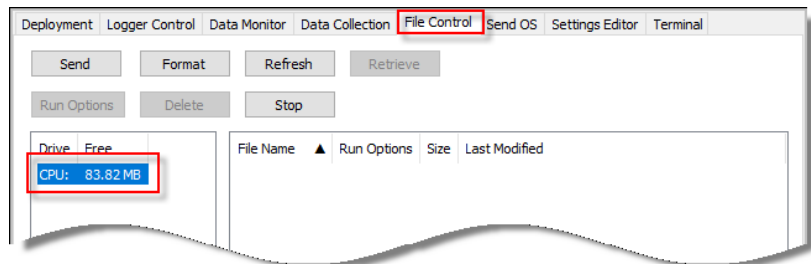
1. Download the executable, CR3XX_Wifi_OS_Update_X.X.X.exe, from our website at www.campbellsci.com/downloads.
2. Run the executable file.
3. Apply power to the CR300 series. (A USB connection supplies 5 V power, but is not sufficient to power the WiFi module which must be powered to complete this procedure.)
4. If not using WiFi, connect your communication cable to the CR300 series.
5. Open *Device Configuration Utility (DevConfig)*.
6. Under **Device Type**, select **CR300 Series**.
7. Select the correct **Communication Port**. (If using WiFi, select the **Use IP Connection** checkbox and browse to or enter the IP address.)
8. Click **Connect**.



- As a precaution, backup the CR300-series data logger using the wizard accessed from the **Backup | Back Up Datalogger...** command (see www.campbellsci.com/blog/update-datalogger-operating-system).
- Verify that you are running CR300 series version 06.01 or later operating system. You can see this information in the **Deployment | Datalogger** tab in *DevConfig*. If you are running an earlier operating system, update the operating system (see www.campbellsci.com/blog/update-datalogger-operating-system).

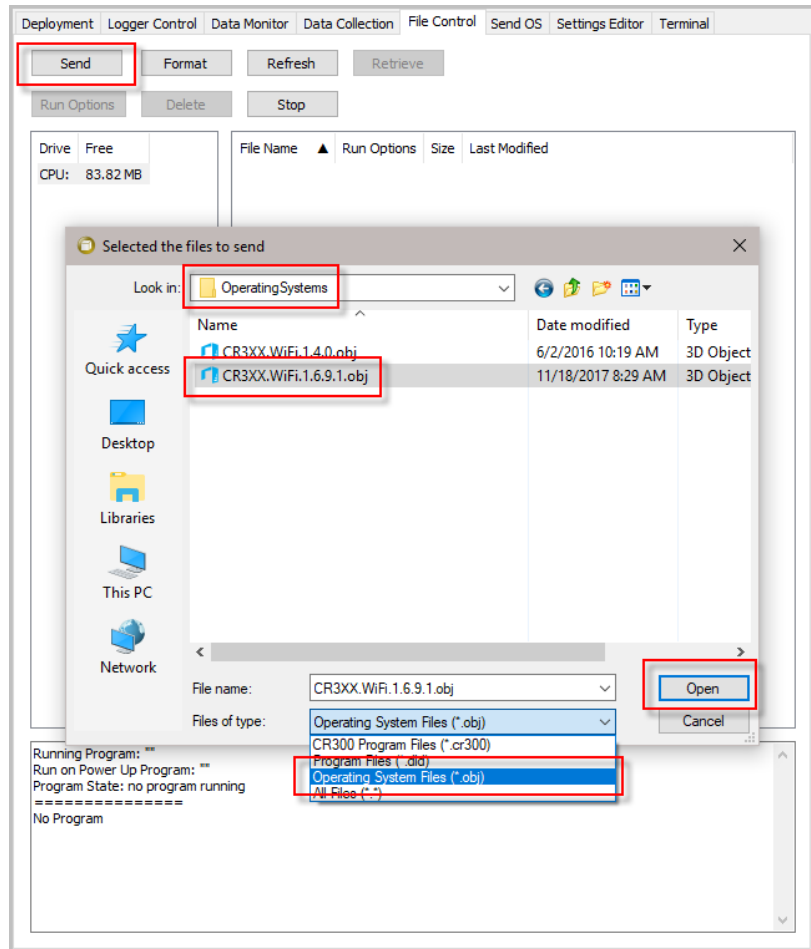


- Click the *DevConfig* **File Control** tab.
- Click the **CPU:** drive.

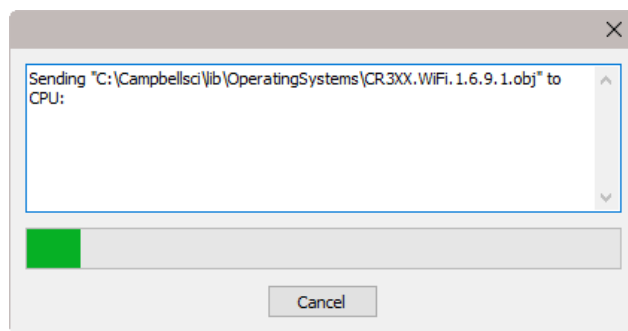


- Click **Send**.
- The **Select the files to send** dialog will appear. Navigate to the `C:\Campbellsci\Lib\OperatingSystems` directory.
- Set the **Files of type:** drop-down list to **Operating System Files (*.obj)**.
- Select **CR3XX.WiFi.X.X.X.obj** from the file list.

17. Click **Open**.



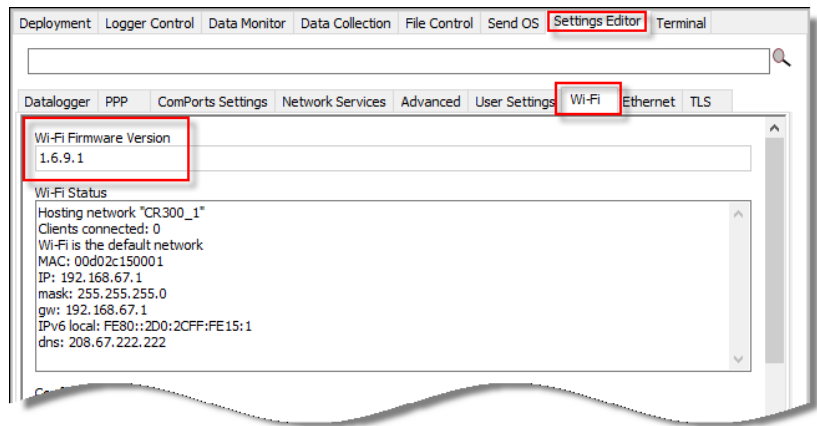
18. The new WiFi operating system is sent to the data logger.



19. Once the progress bar reaches 50%, the **WiFi** LED on the data logger will start flashing quickly for a period of time; then the data logger will reboot. The update generally takes five to six minutes to complete.

20. Click **OK** once the progress bar reaches 100%.

21. Go to the *DevConfig Settings Editor* | **WiFi** tab and check that the **Wi-Fi Firmware Version** shows the new version. You may have to press the **F5** key to refresh the displayed information.



Your data logger is now updated and running the latest WiFi daughter board operating system.



Global Sales & Support Network

A worldwide network of companies to help meet your needs



- Campbell Scientific group companies
- Sales representatives

Australia

Location: Garbutt, QLD Australia
Phone: 61.7.4401.7700
Email: info@campbellsci.com.au
Website: www.campbellsci.com.au

Brazil

Location: São Paulo, SP Brazil
Phone: 11.3732.3399
Email: vendas@campbellsci.com.br
Website: www.campbellsci.com.br

Canada

Location: Edmonton, AB Canada
Phone: 780.454.2505
Email: dataloggers@campbellsci.ca
Website: www.campbellsci.ca

China

Location: Beijing, P. R. China
Phone: 86.10.6561.0080
Email: info@campbellsci.com.cn
Website: www.campbellsci.com

Costa Rica

Location: San Pedro, Costa Rica
Phone: 506.2280.1564
Email: info@campbellsci.cc
Website: www.campbellsci.cc

France

Location: Vincennes, France
Phone: 0033.0.1.56.45.15.20
Email: info@campbellsci.fr
Website: www.campbellsci.fr

Germany

Location: Bremen, Germany
Phone: 49.0.421.460974.0
Email: info@campbellsci.de
Website: www.campbellsci.de

South Africa

Location: Stellenbosch, South Africa
Phone: 27.21.8809960
Email: sales@campbellsci.co.za
Website: www.campbellsci.co.za

Southeast Asia

Location: Bangkok, Thailand
Phone: 66.2.719.3399
Email: thitipongc@campbellsci.asia
Website: www.campbellsci.asia

Spain

Location: Barcelona, Spain
Phone: 34.93.2323938
Email: info@campbellsci.es
Website: www.campbellsci.es

UK

Location: Shepshed, Loughborough, UK
Phone: 44.0.1509.601141
Email: sales@campbellsci.co.uk
Website: www.campbellsci.co.uk

USA

Location: Logan, UT USA
Phone: 435.227.9120
Email: info@campbellsci.com
Website: www.campbellsci.com