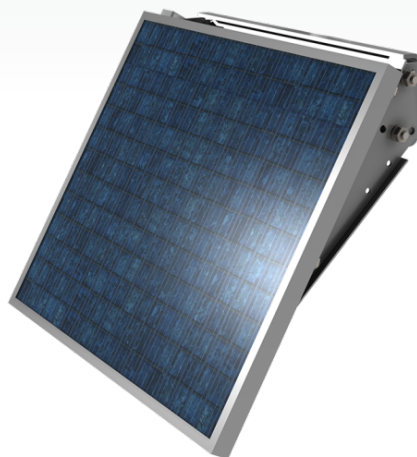




SP20
20 W Solar Panel



Overview

The SP20 is a 20 W solar panel. It is often used for system configurations that have higher-than-average power requirements, or in higher elevation and latitude locations. It connects to Campbell Scientific power supplies and battery

bases to recharge the battery, and it allows unattended operation of systems in remote locations that are far from ac electrical sources.

Benefits and Features

- ▶ Supplies electrical power in locations where ac power is unreliable, expensive, or not available
- ▶ Recharges the sealed rechargeable battery of a PS150, PS200, BP12 (requires CH150 or CH200), BP24 (requires CH150 or CH200), CR3000, CR5000, CR6, or CRW3

Detailed Description

The SP20's 15-ft cable has stripped and tinned leads that connect to the PS150, PS200, CH150, CH200, or battery base of the CR3000, CR5000, CR7, CR9000X, CR6, or CRW3. A 788 connector must be soldered onto the solar panel leads to use the SP10 with a 21XL rechargeable base.

Included mounting hardware consists of two part no. 17492 U-bolt and matching nuts. The U-bolt has a 5.398 cm (2.125 in.) space between the U-bolt legs. This hardware allows the solar panel to be mounted to a 0.75-1.5 in. IPS pipe [25.4-50.8 cm (1-2 in.) OD].

Specifications

-NOTE-

Solar panel characteristics assume 1 kW m⁻² illumination and 25°C solar panel temperature. Individual panels may vary up to 10%. The

output panel voltage increases as the panel temperature decreases.

Cable Description	20 AWG, 1-twisted pair
Maximum Peak Power	20 W

Maximum Allowable Wind Gust Speed *» Note: The wind ratings are for solar panels with the indicated mounts and do not account for strength of tower or tripod.*

- » 44 m s⁻¹ (99 mph) Standard mount*
- » 58 m s⁻¹ (130 mph) Extended mount*

Guaranteed Minimum Peak Power 18 W

Current at Peak	1.19 A
Voltage at Peak	16.8 V
On-board Regulator Included	No
Cable Length	4.572 m (15 ft)
Dimensions	50.0 x 42.2 x 5.1 cm (19.7 x 16.6 x 2 in.)
Weight	4.4 kg (9.6 lb)

For comprehensive details, visit: www.campbellsci.com/sp20 



Campbell Scientific, Inc. | 815 W 1800 N | Logan, UT 84321-1784 | (435) 227-9120 | www.campbellsci.com
AUSTRALIA | BRAZIL | CANADA | CHINA | COSTA RICA | FRANCE | GERMANY | THAILAND | SOUTH AFRICA | SPAIN | UK | [USA](#)

© 2019 Campbell Scientific, Inc. | 08/27/2019