



RTMC

RTMC Development, RTMC Pro, RTMC Run-Time, and CSI Web Server

## RTMC Development

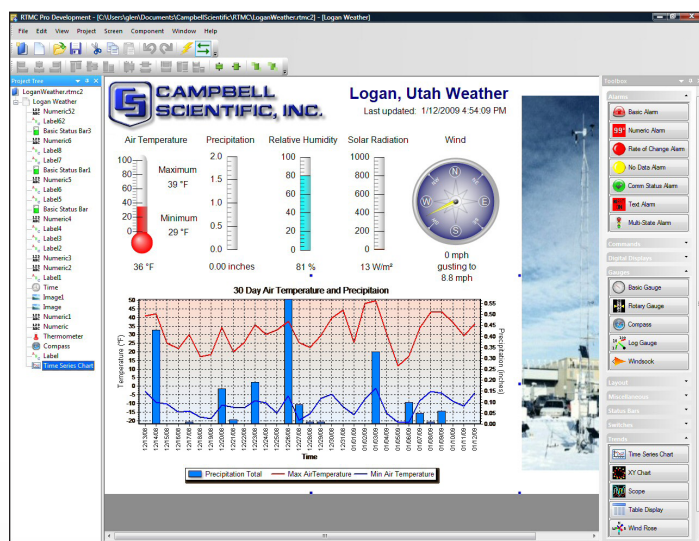
RTMC (real-time monitoring and control) allows you to create a graphical display of your datalogger data. The standard RTMC Development application and RTMC Run-Time are included with LoggerNet, LoggerNetAdmin, and RTDAQ datalogger support software.

RTMC Development provides the following tools.

- Point-and-click interface
- Alarm, slider, chart, switch, table, gauge, status bar, numeric, label, image, time, compass, thermometer, and value forwarder components

These tools allow you to create projects that when opened in RTMC Run-Time:

- Display data from any number of dataloggers in the network (RTDAQ only allows one datalogger)
- Access statistical data reported by the LoggerNet or RTDAQ server, including the current state of your datalogger network and trigger alarms based on system critical information
- Perform post processing on the data being displayed
- Allows the user to change input locations, public variable values, and toggle ports/flags
- Forward data from one datalogger to another



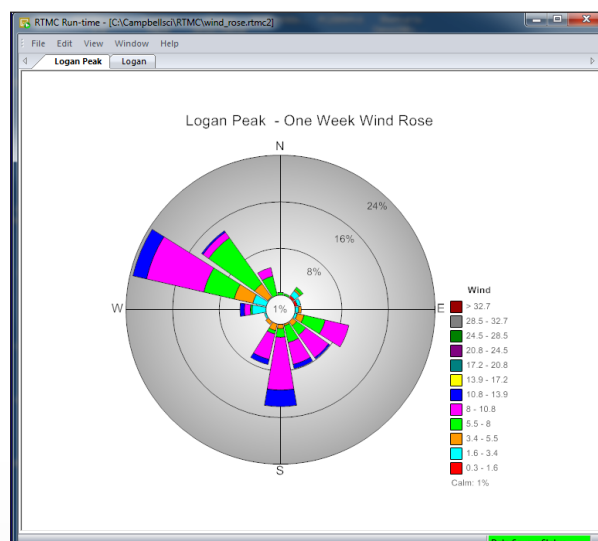
With its point-and-click interface, RTMC or RTMC Pro (above) is a simple solution for generating real-time displays.

## RTMC Pro

RTMC Pro, an enhanced version of RTMC Development, is purchased separately. It also includes RTMC Run-Time. RTMC Pro provides many advantages over the standard RTMC Development application including:

- Ability to use LNDB databases, data files, HTTP dataloggers, virtual data sources, and multiple LoggerNet Servers as data sources
- CSI Web Server for viewing your data from a web browser (see next page)
- Ability to generate reports
- More graphical components. For example, more alarms, switches, graphs, gauges, and layout components are available
- Components to run/open a file, run a Cora-Script command (LoggerNet command), or view a web page
- Images of the project that can be saved and transferred to a web server automatically
- Ability to send email messages or execute programs when alarms occur. Alarm activity can be logged to a file
- An expression builder to simplify using expressions to process data values being displayed
- More settings for components existing in both RTMC Development and RTMC Pro, which enables more design control

Users can go to [www.campbellsci.com/downloads](http://www.campbellsci.com/downloads), and receive a fully-functional 30-day trial version of RTMC Pro.



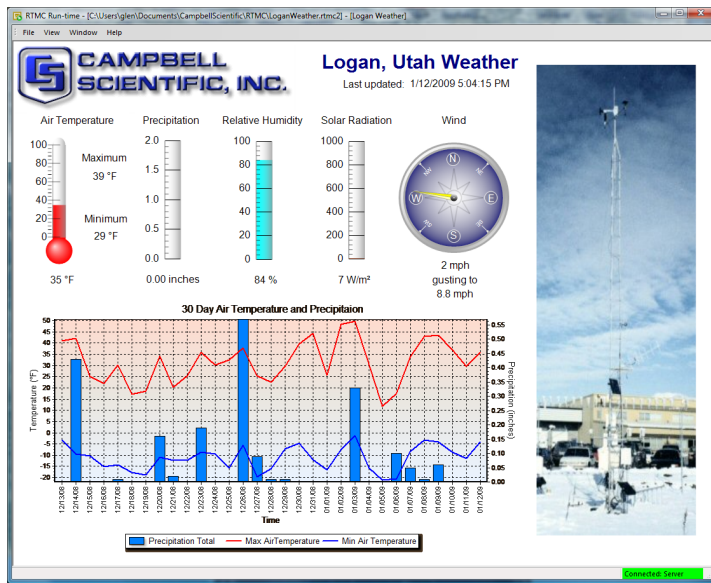
With RTMC Pro, users can create a wind rose report that displays the distribution of wind directions at various wind speeds.

questions & quotes: 435.227.9120

[campbellsci.com/data-analysis-software](http://campbellsci.com/data-analysis-software)



## RTMC Run-Time (RTMCRT)



RTMC projects developed in RTMC Development or RTMC Pro are run using RTMC Run-Time. RTMC Run-Time is included with LoggerNet, LoggerNetAdmin, RTDAQ, and RTMC Pro. Additional RTMC Run-Time versions can be purchased separately and installed on computers that are networked to a LoggerNet computer. This allows remote computers to display data in a graphical format from a LoggerNet server.

As LoggerNet collects data from the datalogger, the displays in RTMC Run-Time are automatically updated. RTMC Run-Time also allows the user to change public variable values or input locations, as well as toggle ports/flags if those capabilities were enabled in the RTMC project during development.

▶ The RTMC Run-Time and CSI Web Server clients run projects created in RTMC Development or RTMC Pro. RTMC Development is bundled with LoggerNet, LoggerNet Data, and RTDAQ.

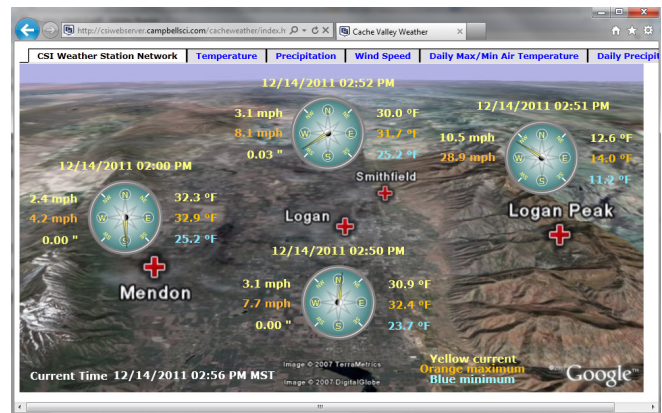
## CSI Web Server

The CSI Web Server is included with RTMC Pro and can also be purchased separately. It allows you to view your RTMC projects using a web browser. You can also change input locations and public variable values, toggle ports/flags, and browse through historical report data from a web browser.

The CSI Web Server includes a CSI Web Server Administrator and a Web Publisher. The CSI Web Server Administrator allows you to configure the web server, check the status of the web server, set up user accounts and passwords, and easily browse to sites running on the web server. The Web Publisher allows you to publish your RTMC project to either a computer website using the CSI Web Server or to an HTTP enabled datalogger (publishing to a datalogger requires an RTMC Pro project).

▶ CSI Web Server was used to simultaneously display data from multiple dataloggers on one web page.

A CSI Web Server trial is included with the RTMC Pro trial version. To receive this fully-functional 30-day trial version, go to [www.campbellsci.com/downloads](http://www.campbellsci.com/downloads).



## CSI Web Server for Linux

CSI Web Server for Linux provides a solution for those who want to run the CSI Web Server in a Linux environment. The package includes a Linux version of the CSI Web Server and a Windows version of the Web Publisher. The Web Publisher is installed on a Windows machine and used to publish RTMC projects to the Linux-based CSI Web Server. CSI Web Server for Linux includes a Debian distribution and a Red Hat RPM distribution.

## Requirements and Certificates

- ▶ Computer Operating System: Windows 10, 8, or 7 (both 32- and 64-bit versions supported)
- ▶ Military Certificate of Networkworthiness (CoN):
  - RTMC Pro 4.0 is certified as Cert #201620696.
  - RTMC Pro 4.x is certified to include the CSI Web Server and has CoN ID 28201
  - Expires: 8/21/2019

*RTMC Run-Time version 4.3 and CSI Web Server 1.5 are optimized for using projects created with the RTMC 4.3 development tools (RTMC Development or RTMC Pro). Although RTMC Run-Time version 4.3 and CSI Web Server 1.5 can use projects from version 2.5, 3.2, 4.0, 4.1, or 4.2 development tools, the run-time display or web display may look different than what's expected. For best performance, RTMC version 4.3 development tools should be used to develop projects for RTMC Run-Time version 4.3 and CSI Web Server 1.5.*

