

Datalogger Support Software for Windows

PC208W

PC208W software facilitates programming, communication, and reliable exchange of data

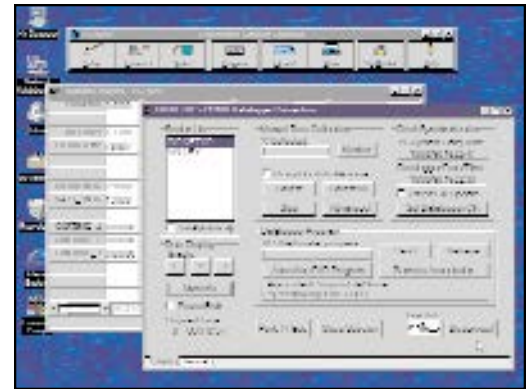
between a PC and our CR500, CR510, CR10(X), 21X, CR23X, and CR7 dataloggers. PC208W's interactive toolbar launches and controls independent windows used to communicate with dataloggers, edit programs, view and graph real-time data, retrieve stored data, and process data files. The toolbar is free-floating and its orientation can be horizontal or vertical. Starting with revision 3.0, you can now download a free patch to the latest revision within a version (i.e. 3.x to 3.y) from our website at www.campbellsci.com/resource.html.



Communicating with Setup and Connect



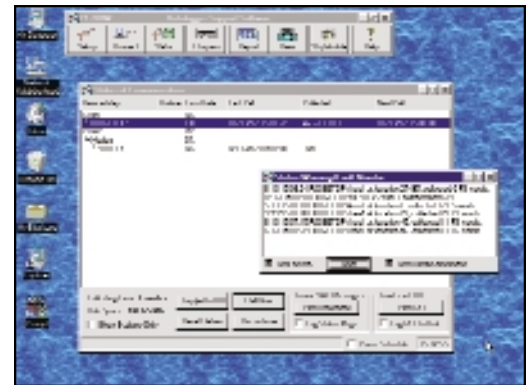
- Allows you to build communication links for one station or an entire network
- Supports TCP/IP, telephone, radio, cellphone, short haul or multi-drop modems, and direct communication links
- Collects data on demand or schedule
- Transfers programs to the datalogger
- Resets the datalogger's clock
- Controls datalogger flags and control ports
- Monitors and displays real-time measurements in tabular or graphical form



Assessing Communications with Status



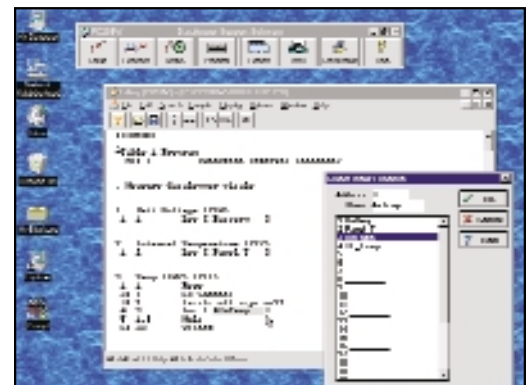
- Monitors your entire network from one screen
- Launches "stay-on-top" windows for status messages and low-level input/output communications
- Saves status messages and low-level input/output communications to log files



Creating and Editing Datalogger Programs with EDLOG



- Uses "select-from-a-list" and "fill-in-the-blank" programming
- Provides point-and-click access to pick lists for inserting instructions, selecting parameters, and accessing help
- Displays multiple programs, allowing cut and paste between them
- Allows comments to be inserted for documentation
- Supports direct entry of algebraic expressions to process data



CAMPBELL SCIENTIFIC, INC.

815 W. 1800 N. • Logan, Utah 84321-1784 • (435) 753-2342 • FAX (435) 750-9540 • www.campbellsci.com

Processing Data with SPLIT



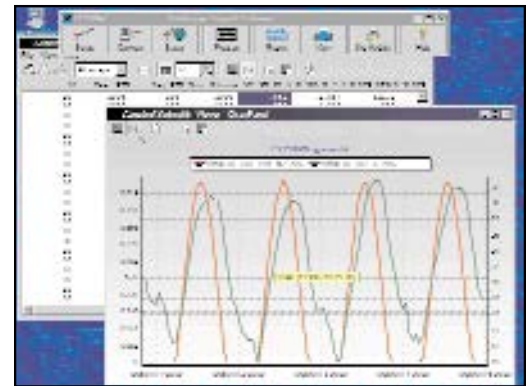
- Allows you to select data files, choose data fields, and set options with point-and-click functions
- Sorts and combines data based on time or conditions
- Splits large data files into smaller, more easily analyzed files
- Processes data using arithmetic operators, math functions, spatial functions, and time-series functions
- Creates output files that are compatible with spreadsheet programs
- Supports command line entries for scheduling processing routines and sending the final report to a printer



Displaying Data Files with VIEW



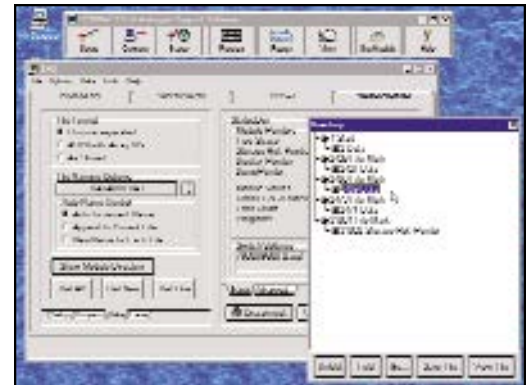
- Allows you to view or graph data files that were originally saved in comma-separated, binary, or printable ASCII format
- Displays data files in ASCII, tabular, or hexadecimal format
- Graphs up to two traces
- Prints files and graphs



Accessing Storage Modules with SMS



- Supports solid-state and card storage modules
- Transfers datalogger programs to and from storage modules and cards
- Clears, configures, and tests storage modules or cards
- Retrieves all or part of a storage module's or card's data
- Allows viewing stored data before uploading to a computer
- Appends data to an existing file or creates a new one



Minimum Requirements

- Windows 3.1, 95, 98, NT, or 2000 operating system required
- Complete installation requires 15 MB disk space
- VGA monitor
- RS-232 port(s) for modem or serial communication interfaces, ethernet card, and TCP/IP software for TCP/IP communications



CAMPBELL SCIENTIFIC, INC.

815 W. 1800 N. • Logan, Utah 84321-1784 • (435) 753-2342 • FAX (435) 750-9540
Offices also located in: Australia • Brazil • Canada • England • France • South Africa • Spain

Copyright © 1998, 2001
Campbell Scientific, Inc.
Printed July 2001