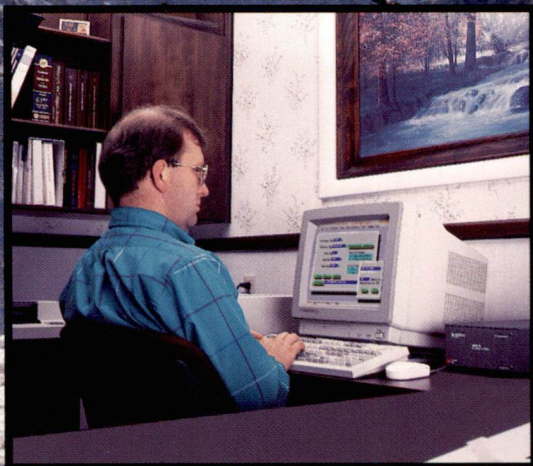


# PC208 Datalogger Support Software

For datalogger to . . .

. . . computer communication



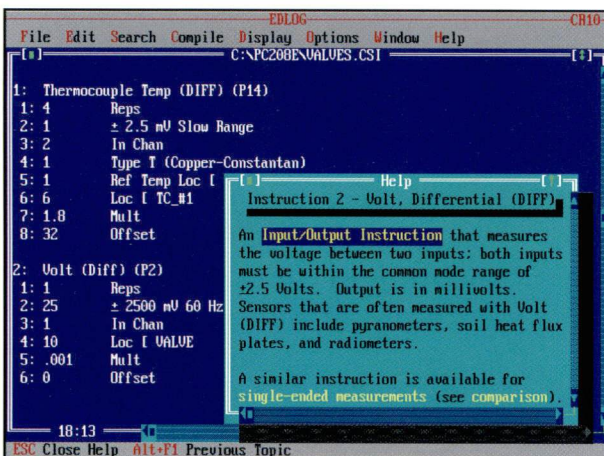
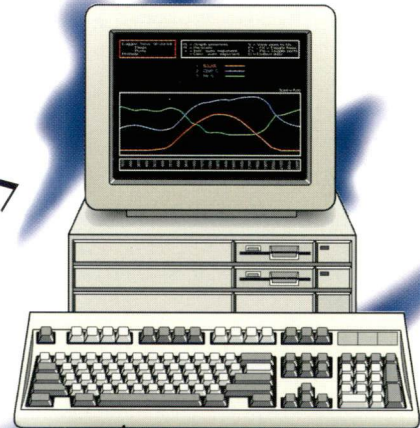
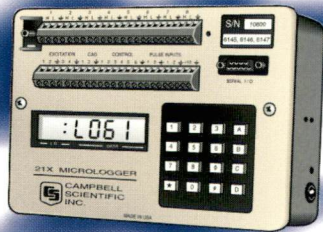
**CAMPBELL SCIENTIFIC, INC.**

815 W. 1800 N. • Logan, Utah 84321-1704 • (801) 753-2342 • FAX (801) 750-9540

# PC208 Datalogger Support Software (Enhanced Version)

**PC208 Software** simplifies the exchange of data, programs, and commands between a Campbell CR10, 21X, or CR7 datalogger and a PC-compatible computer. The software assists the user in:

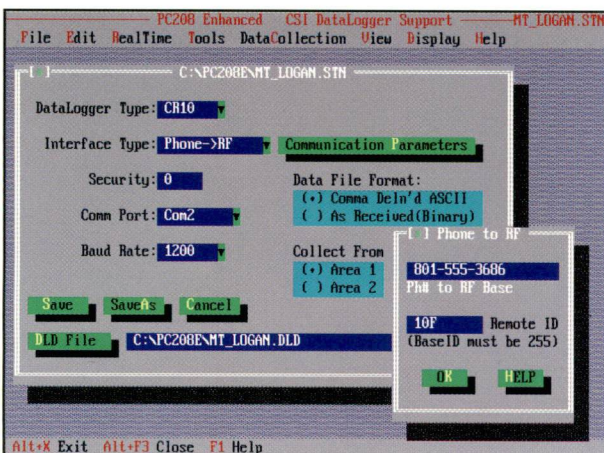
- Creating a datalogger program
- Transferring the program to the datalogger
- Monitoring real-time measurements
- Retrieving stored data
- Processing data and generating reports



## Creating and Editing Datalogger Programs (EDLOG)

- Uses “select-from-a-list” and “fill-in-the-blank” programming sequence.
- Features mouse support and pull-down menus.
- Cuts and pastes instructions between displayed programs.
- Allows insertion of comments for documentation.
- Supports direct entry of algebraic expressions to process data.
- Checks program structure and syntax.

Datalogger programs are created and edited in EDLOG where extensive on-line help is available.



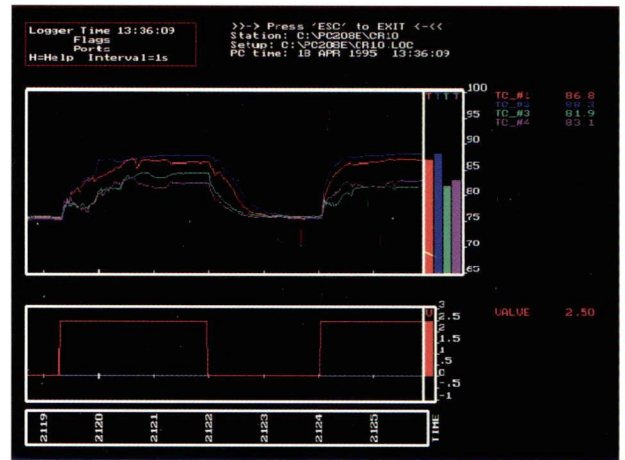
## Communicating with the Datalogger (PC208E)

- Supports communication via telephone (including cellular), UHF- or VHF-radio, short haul modem, multidrop modem (coax), or direct connection (interface and ribbon cable). Product literature describing these options is available.
- Edits telecommunication parameters including modem information, datalogger type, and baud rate.
- Transfers a program to the datalogger.
- Sets/displays the datalogger’s clock time.
- Monitors/controls datalogger flags and control ports.

PC208E provides annotated screens for entering telecommunication parameters.

## Communicating with the Datalogger (PC208E) (cont.)

- Monitors/displays the dataloggers real-time measurements in tabular form or trend chart/bar graph.
- Collects datalogger data on demand or on a schedule.
- Answers datalogger-initiated calls.
- Ensures data integrity during transmission with an error-checking algorithm.



PC208E graphs real-time data transmitted from the datalogger.

## Processing & Splitting Data Files (SPLIT)

- Selects data from one or more files; splits large data files into smaller, more easily analyzed files.
- Creates files that are compatible with popular spreadsheet programs.
- Sorts and combines data based on time or conditions; flags out-of-range data.
- Processes data using arithmetic operators, math functions, spatial functions, and time-series functions.
- Converts day-of-year to calendar date; time-synchronizes processed data.

```

Arrays read: 722
Lines written: 722
Edit Run Save Quit Load new parameter file

Value Temperatures 4-27-1995

TIME TC #1 TC #2 TC #3 TC #4
(SEC) (°F) (°F) (°F) (°F)
-----
52 74.9 74.3 74.6 74.3
53 74.9 74.3 74.6 74.3
54 74.9 74.4 74.6 74.3
55 75 74.4 74.6 74.3
56 75 74.4 74.5 74.3
57 74.9 74.4 74.5 74.2
58 74.9 74.4 74.5 74.2
59 74.9 74.3 74.5 74.2
0 74.9 74.3 74.4 74.1
1 74.9 74.3 74.4 74.1
2 74.8 74.3 74.4 74.1
3 74.8 74.2 74.4 74.1
4 74.8 74.3 74.4 74.1
5 74.8 74.2 74.4 74.1

Reading files completed.
    
```

SPLIT processes and displays data selected from one or more data files.

## Using Storage Modules (SMCOM, CSMCOM, SMCREAD)

- Transfers datalogger programs to storage modules for transport to datalogger.
- Retrieves all or part of a storage module's data.
- Resets, clears, and configures storage modules (e.g. fill-and-stop vs. ring memory).
- SMCOM supports use of solid-state storage modules and is included with PC208.
- CSMCOM supports use of memory cards via card storage modules; SMCREAD supports use of memory cards via a PCMCIA slot on a computer. These packages are distributed with the card storage modules and once installed are run from PC208.

```

Address Switch: 1 PROM Signature: 16278
Baud Rate Switch: 76800/9600 Data Locations: 96432
Fill & Stop Switch: OFF Locations Used: 39860
Encode ASCII Switch: ON Storage Location: 39861
Programs Stored: 0 Display Location: 39861

-----
SMCOM Ver 4.2
Copyright (c) 1986, 1987, 1988, 1989, 1990, 1992
Campbell Scientific, Inc.
Logan, Utah 84321

SMCOM Options:
T - Terminal emulator.
A - Collect all data files.
U - Collect uncollected data files.
N - Collect newest data file.
L - Collect one data file starting at display pointer L.
P - Collect program files.
D - Store a .DL program file.
F - Store a file.
E - Erase and reset storage module.
C - Clear data area.
S - Switch settings.
Q - Quit

Option:
    
```

SMCOM supports use of storage modules.

# Minimum Requirements

## Computer

- IBM 286, 386, 486 and Pentium® or compatibles  
(Graph update speed is related to computer's speed.)
- DOS, version 3.3 or greater (5.0 or greater recommended)
- 640K bytes of RAM (500K free for graphics)
- Hard disk
- Complete installation requires 2M bytes disk space
- CGA, EGA, VGA or Hercules Graphics

(Campbell Scientific supports operation of its PC products ONLY where 100% IBM compatibility has been verified.)

## Datalogger

Older dataloggers may require a PROM upgrade to OS-series software (i.e., OS10, OSX, or OS7) to support all functions.

## Distribution Media

PC208 software is distributed on a 3.5", 1.44 Mbyte disk. Specify PC208-3 for 3.5", 720K byte diskettes. Specify PC208-5 for 5.25", 360K byte diskettes. PC208 upgrades and additional licensed copies are available at reduced cost; see our Price List for further details.

## Conditions of Use

PC208 software is protected by both the United States copyright law and international copyright treaty provisions. You may copy it onto a computer to be used and you may make archival copies of the software for the sole purpose of backing-up Campbell Scientific, Inc. software and protecting your investment from loss. All copyright notices and labelling must be left intact.

PC208 software may be used by any number of people, and may be freely moved from one computer location to another, so long as there is no possibility of it being used at one location while it's being used at another. A single copy of the software, under the terms of the PC208 license, cannot be used by two different people in two different locations at the same time.



**CAMPBELL SCIENTIFIC, INC.**

815 W. 1800 N. • Logan, Utah 84321-1784 • (801) 753-2342 • FAX (801) 750-9540  
Offices also located in: Australia • Canada • England • France



Copyright © 1991, 1995  
Campbell Scientific, Inc.  
Printed May 1995  
Printed on Recycled Paper