



# DataView II (CD295)

Dual Line Display



# Table of Contents

---

PDF viewers: These page numbers refer to the printed version of this document. Use the PDF reader bookmarks tab for links to specific sections.

<b>1. Introduction.....</b>	<b>1</b>
1.1 Changes from Version 1 to Version 2 .....	1
1.2 Normal Operation Overview .....	2
<b>2. Installation Procedure .....</b>	<b>3</b>
<b>3. Software .....</b>	<b>3</b>
3.1 Computer System Requirements .....	3
3.1.1 Minimum Configuration .....	3
3.1.2 Recommended Configuration .....	3
3.2 Software Installation .....	3
<b>4. Programming .....</b>	<b>5</b>
4.1 <i>PC295W</i> .....	5
4.1.1 Operation.....	6
4.1.2 Online Help.....	11
4.2 <i>Device Configuration Utility</i> .....	11
4.2.1 Operation.....	12
4.2.1.1 Establishing a Connection .....	12
4.2.1.2 Downloading a Program.....	13
4.2.1.3 Modifying Settings .....	15
4.2.1.4 Upgrading the Operating System (OS).....	15
<b>5. Mounting in Enclosure Door.....</b>	<b>17</b>
<b>6. Shipping Kit .....</b>	<b>19</b>
<b>7. Hardware .....</b>	<b>19</b>
<b>8. Problems .....</b>	<b>20</b>
<b>9. Temperature Extremes and LCD Adjustment.....</b>	<b>22</b>
<b><i>Appendices</i></b>	
<b>A. CD295 Door Kit Assembly Diagram .....</b>	<b>A-1</b>
<b>B. CD295 Mounting Template.....</b>	<b>B-1</b>
<b>C. Using Time Stamps .....</b>	<b>C-1</b>

# ***DataView II (CD295) Dual Line Display***

---

## **1. Introduction**

The DataView II is a two-line, 32-character LCD that displays real time values from a CR2xx series data logger along with a predefined description string and units string.

Two buttons allow the user to scroll through the programmed locations that are updated as often as they are measured. When the user has not pressed a button within a user-defined period (default 120 seconds), the DataView II switches to low power mode, drawing a current of less than 1 mA.

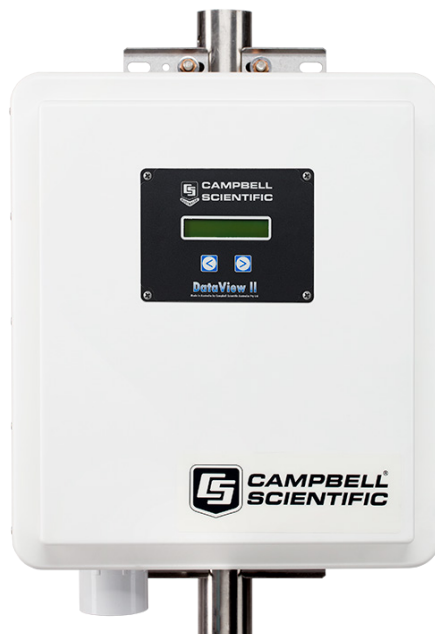
The DataView II is easily configured using the Windows based *PC295W* and *Device Configuration Utility* packages.

---

### **NOTE**

Throughout this document the terms “DataView II”, “CD295” and “DataView2” are used interchangeably.

---



*FIGURE 1-1. DataView II (CD295)*

### **1.1 Changes from Version 1 to Version 2**

The original release of the CD295 operating system (V1.0) and *PC295W* (V1.0) supported the CR200-series data loggers only. Version 2 of the CD295 operating system and *PC295W* added support for our CR1000, CR800, CR850, and CR3000 data loggers, as well as support for their new data types (long integers, Booleans, strings, and time stamps).

To use the new capabilities, both the CD295 operating system (OS) and *PC295W* software needs to be upgraded to Version 2. Refer to Section 4.2.1.4, *Upgrading the Operating System (OS)* (p. 15), to upgrade the CD295 OS. To upgrade *PC295W*, uninstall previous software versions and then follow the procedure provided in Section 3.2, *Software Installation* (p. 3).

## 1.2 Normal Operation Overview

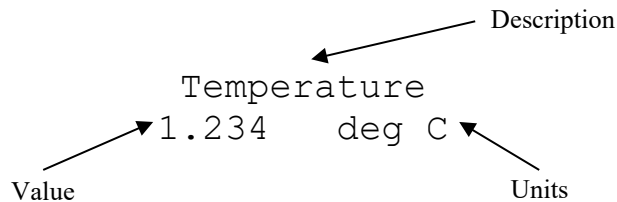
Below is a general description of normal operation of the DataView II (CD295).

When first powered up, the DataView II displays the following greeting,

Campbell  
Scientific

and the backlight will be lit.

After a program has been successfully downloaded, the CD295 is configured and connected to the data logger; it is ready for general use. Pressing one of the buttons on the CD295 will cause the LCD to display something like the example below.



The top line contains a string referred to as the “Description”, and the second line contains both the value retrieved from a Public Variable in the data logger and a string referred to as “Units”. The value displayed on the second line can be displayed with a user-selectable number of decimal places.

Together, the combination of “Description”, Public Variable, “Units” and number of decimal places, is referred to as a “screen”. The CD295 is capable of holding and displaying up to 30 “screens”. There are no limitations on the order of screens, or which Public Variables are displayed. Pressing the buttons on the front panel of the DataView II will cause the next (or previous) screen to be displayed.

The CD295 will attempt to collect a new value from the data logger under the following conditions:

- The user has changed “screen”
- The scan interval of the data logger has expired

After some time (default 10 secs), the backlight will turn off, however the text will remain visible until the unit enters sleep mode (default 120 secs).

Whenever one of the buttons on the front panel is pressed, these two timers (Backlight timer and Power Down timer) are both reset. As a result, the DataView II can be woken from sleep mode by pressing either of the buttons.

While in sleep mode the DataView II will continue to respond to PakBus communications, however the LCD is turned off and no requests are sent to the data logger.

## 2. Installation Procedure

Below is a general guide to the steps involved in configuring and programming a DataView II (CD295).

1. Download the latest version of the CD295 OS, *PC295W*, and the *Device Configuration Utility* from [www.campbellsci.com/downloads](http://www.campbellsci.com/downloads).
2. Connect the 9-pin D-connector of the programming cable into the CD295 data cable and the other end into your computer serial COM port.
3. Using *PC295W* and the data logger program, configure your screens of your DataView II (DV2 file).
4. Using *Device Configuration Utility*, send the DataView II program (DV2 file), and change any settings (e.g., PakBus Address).
5. Remove the programming cable.
6. Mount the CD295 into your data logger enclosure.
7. Connect the CD295 data cable to the data logger RS-232 port.
8. Power up the data logger and CD295 and verify correct operation.

## 3. Software

### 3.1 Computer System Requirements

#### 3.1.1 Minimum Configuration

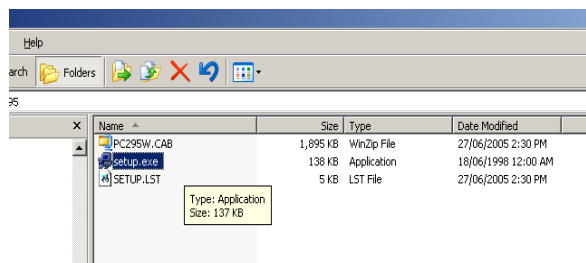
PENTIUM-class machine with 64 MB RAM running Windows 98.

#### 3.1.2 Recommended Configuration

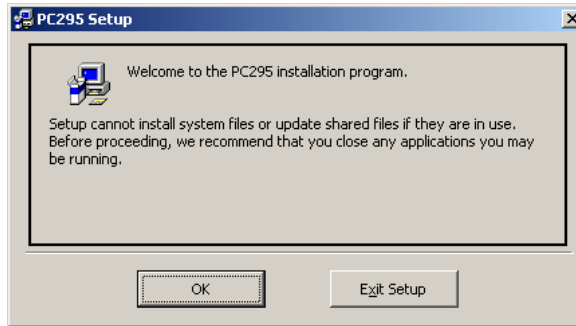
PENTIUM-class machine with 128 MB RAM running Windows 2000/XP.

### 3.2 Software Installation

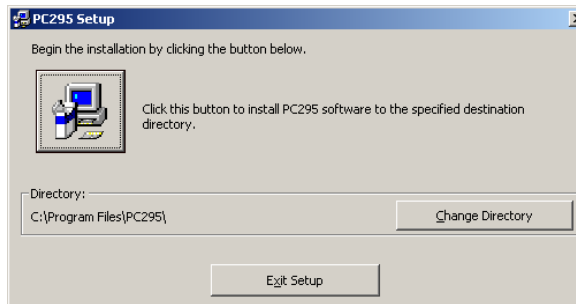
1. To begin the installation of the *PC295W* software, download the latest version of the software from [www.campbellsci.com/downloads](http://www.campbellsci.com/downloads) and open the setup.exe file, which contains the software to be used.



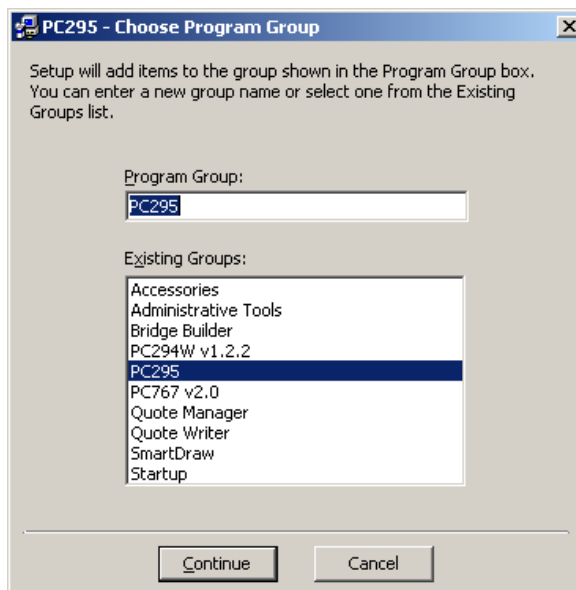
2. After starting Setup.exe you will be presented with a welcome screen giving a brief introduction to the software. Click **OK**.



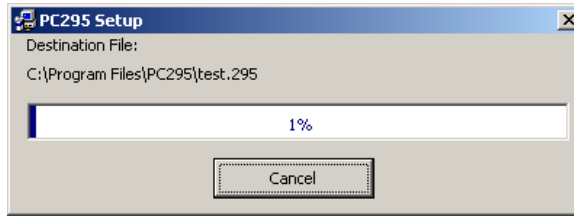
3. The next screen asks where you would like *PC295W* installed on your hard disk. If you wish to install into a path other than the default, click **Change Directory** and use the windows dialog to choose a suitable location. Once the path is correct, click the Install icon in the top left corner of the window.



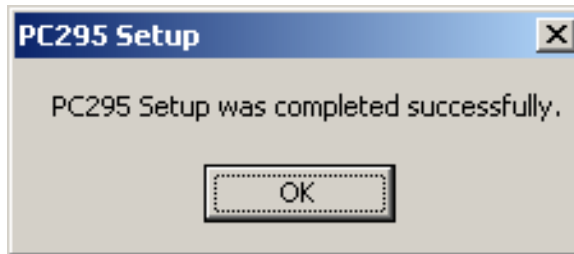
4. The next dialog to appear asks which program group on the start menu, you would like to add *PC295W*. The default is usually acceptable; however, if not, you are free to choose your preferred program group in this step. Click **Continue**.



- File copying will now begin.



- Once the Setup is complete, the following window is displayed. You are now ready to start using *PC295W*. Click **OK**.



## 4. Programming

### 4.1 *PC295W*

*PC295W* software is a freeware utility provided by Campbell Scientific to write programs for the DataView II.

*PC295W* first reads the data logger program, to generate the list of Public Variables and to determine the scan rate of the data logger. Once this information has been determined, the user is able to choose a public variable to display, and can associate "Description" and "Units" strings with it to form a "screen". A group of screens forms a user program, and *PC295W* saves this program to disk in a DV2 file.

---

#### NOTE

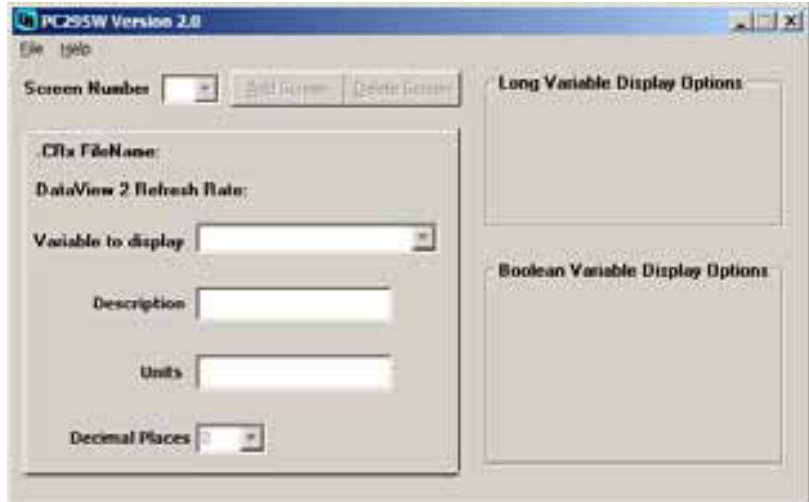
The CD295 is a PakBus device, using PakBus communications to retrieve data from the data logger. However, the CD295 does not support PakBus encryption. When the CD295 is connected to a data logger using PakBus encryption, the data logger program must include an **EncryptExempt()** statement with the PakBus address of the CD295. Note that doing so will introduce an exemption rule to the data logger security rules.

---

By default, the first part of the filename is the same as the data logger program from which it was generated. So, for example, if you opened station1.cr2 to create the DataView II program, *PC295W* would save the program as station1.dv2. This naming convention is strongly recommended, but not mandatory.

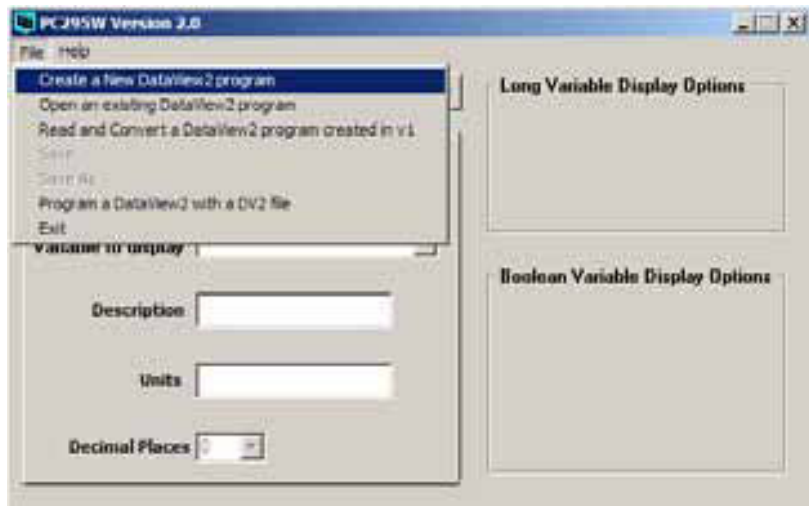
### 4.1.1 Operation

1. To start *PC295W*, click **Start > Programs > PC295W DataView2 Programming Software > PC295W DataView2 Programming Software**.
2. Once the *PC295W* program starts you will see the main screen.



3. The first step in creating a DataView II program is to select **Create new DataView2 Program** from the **File** menu. This will open a file browser window which will allow you to locate the data logger program (with CR1, CR2, CR3, or CR8 extension). When the correct data logger program is selected, click **Open**.

If you already have created a DataView II program that you wish to edit, select **Open Existing DataView2 Program** in the **File** menu. A file browse window will appear. Locate your DataView II program (.295 extension) and click **Open**.



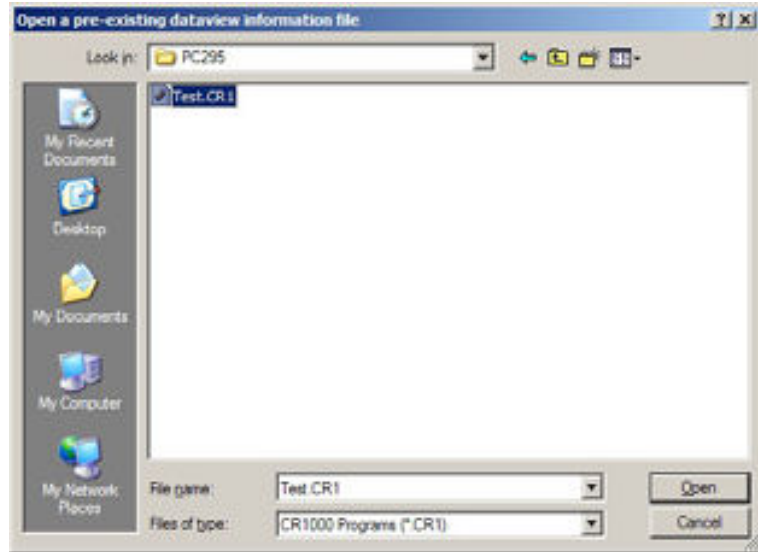


- If you have chosen to **Create a new DataView2 program**, a file browse window will appear.

To operate correctly, your DataView II needs some information about the program running in the data logger to which it will be connected.

*PC295W* reads the data logger program file you select at this step, and extracts information such as the Scan Interval and the list of Public variable names.

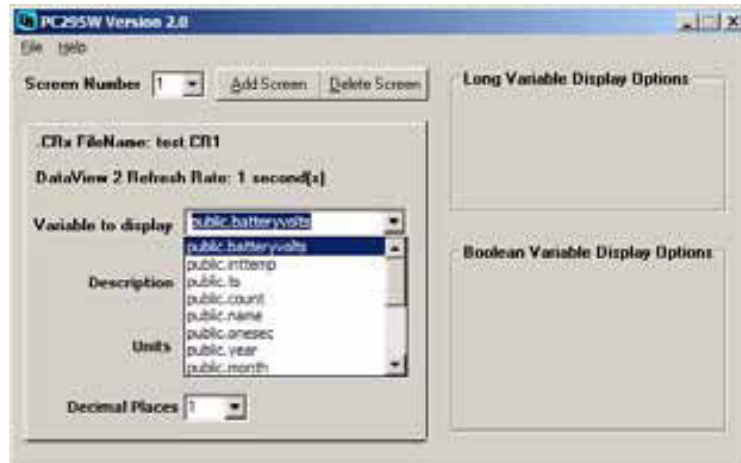
Locate the data logger program and select **Open**.



- PC295W* will now return to the main screen, however the **CRX FileName** and **DataView 2 Refresh Rate** will no longer be blank. *PC295W* has read your data logger program and is now ready for you to create a DataView II program.

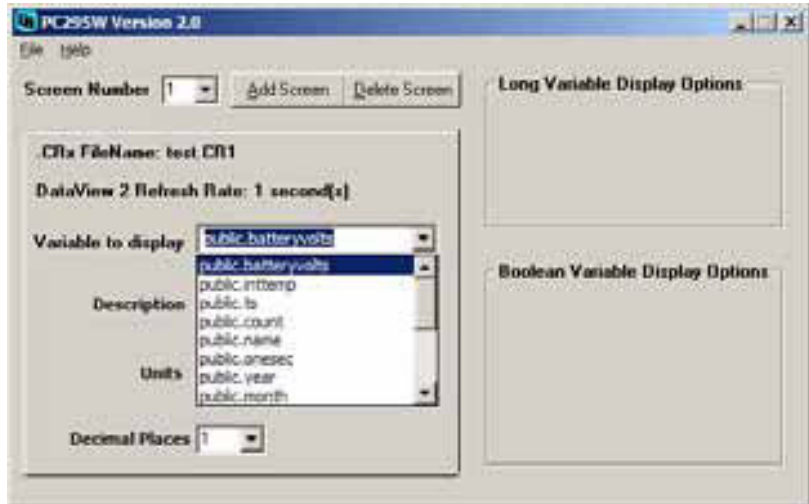
Select the **Add Screen** button.

**Variable to Display** has a dropdown list from which you are able to choose a Public Variable used in the data logger program.



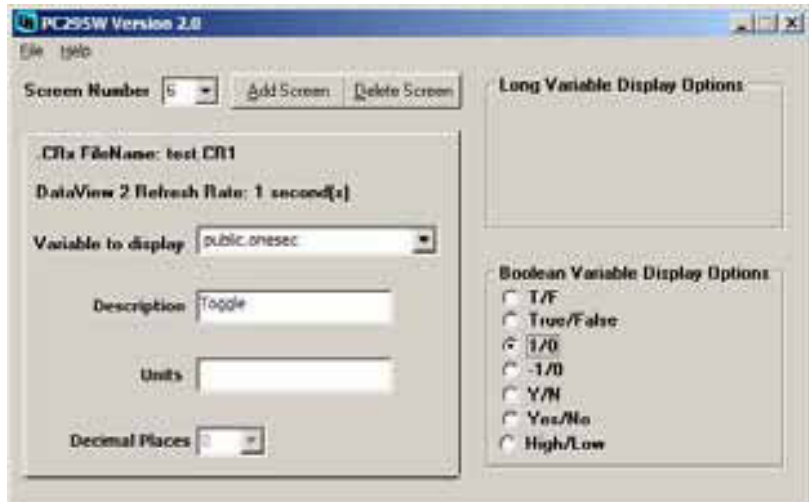
- The **Description** and **Units** fields are free-form text strings that are displayed on the CD295 along with the value collected from the data logger. These fields can be used to provide a user-friendly description and engineering units of the value displayed. It is also possible to choose the number of decimal places to be used when displaying the value.

Complete the **Description**, **Units** and **Decimal Places**.

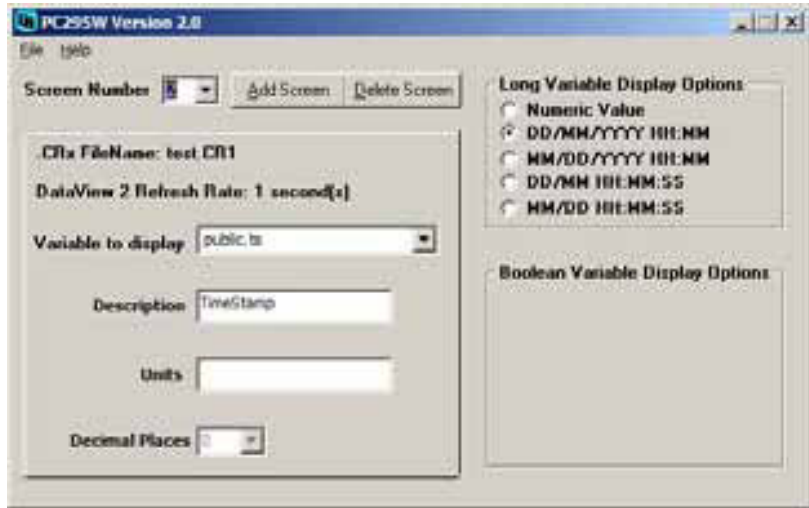


You can now continue adding screens by repeating steps 5 and 6, as many times as necessary.

If the variable you have chosen is not floating point, the **Display Options** panes on the right side of the screen will provide multiple options for displaying the variable. The example below shows the Display Options for a Boolean variable.



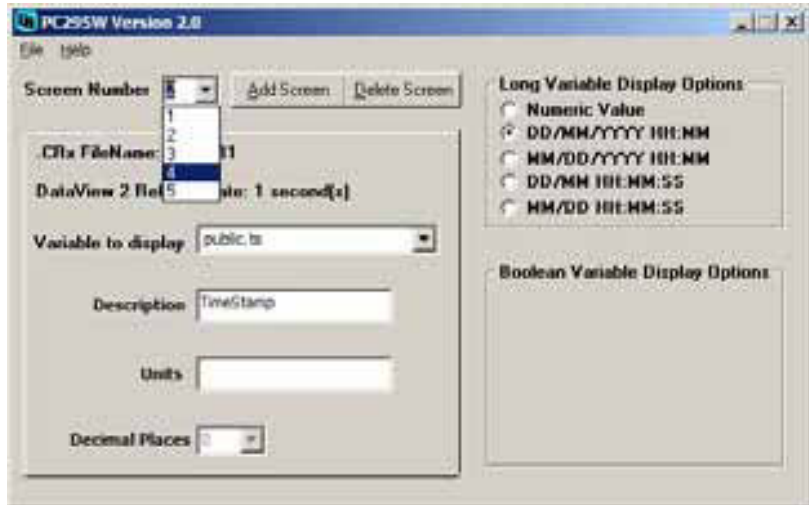
Long integer data types are used to store both integer whole numbers and time stamps. Choose **Numeric Value** for the **Display Option** if your long integer variable is a whole number. Several display options are offered for time stamps (see below).



**NOTE**

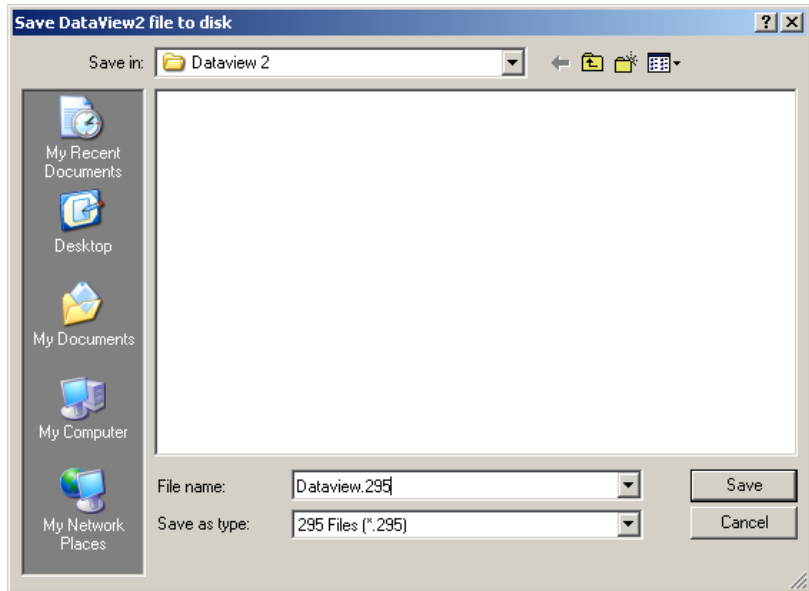
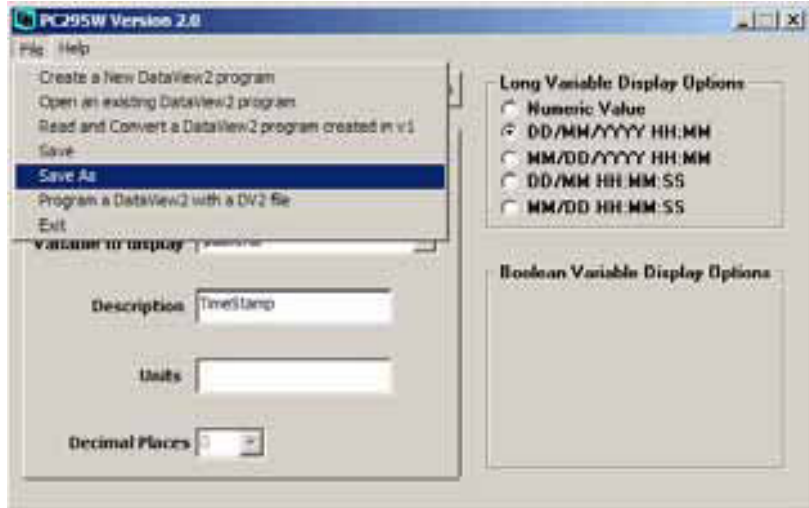
The date stamp will only show meaningful values if the long integers are created correctly. For more information, refer to Appendix C, *Using Time Stamps (p. C-1)*.

7. If at any time you would like to return to an earlier screen, you can do so by using the **Screen Number** dropdown list. Also, if you would like to delete a screen you can select the screen you would like to delete from the **Screen Number** dropdown list and click the **Delete Screen** button.



8. After entering all of the screens in your DataView II program, you will probably want to save your work. Click **File > Save As** and this will open a dialog in which you can specify a filename and save your DataView II program.

If you are modifying an existing program or have already saved your work, you can select the **Save** option which will not prompt for a new filename.



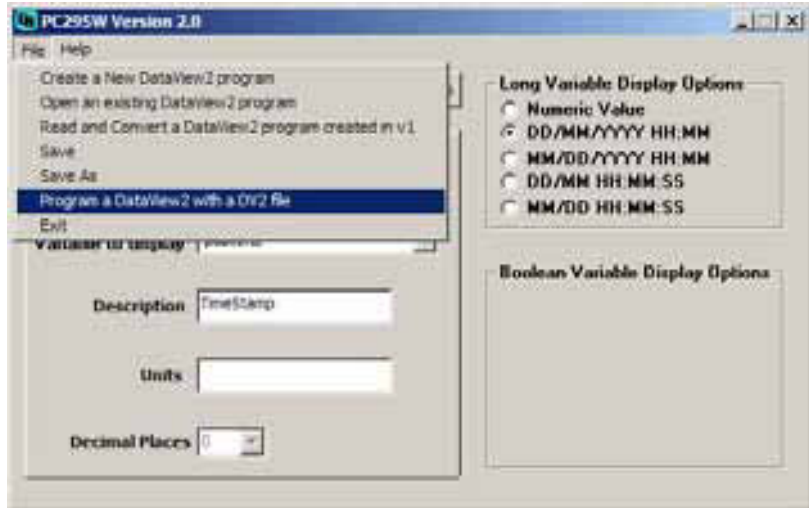
9. Once you have completed and saved the DataView II program, you are ready to download the program into the DataView II itself.

**NOTE**

To do this, you must have the *Device Configuration Utility* installed on your computer. Please ensure that it is installed before proceeding.

To continue with programming the DataView II (CD295), please refer to Section 4.2, *Device Configuration Utility* (p. 11).

From within *PC295W*, *Device Configuration Utility* can be started through the file menu. Click **File > Program a DataView2 with a DV2 file**.



### 4.1.2 Online Help

*PC295W* has two items on the Help menu — **PC295** and **About**. **About** lists the version number of the *PC295W* software, and **PC295** contains online help to guide you through operation of the software. It is a simple step-by-step guide to writing your DataView II program.

## 4.2 Device Configuration Utility

*Device Configuration Utility* is a freeware utility provided by Campbell Scientific for the configuration of PakBus devices. This tool allows the user to send programs, upgrade firmware in the device, and modify device settings.

In the case of the CD295, *Device Configuration Utility* allows you to download your program, and read/modify the following settings:

*Version*

the operating system version number

*CD295 Address*

the PakBus address of the DataView II

*Logger address*

the PakBus address of the data logger from which the CD295 should collect values

*Logger Security Code*

the security of the data logger – this should always be 0 for the CR200

*Power Down Timer*

the period of time after which the CD295 should return to sleep mode

*Serial Number*

the serial number of the DataView

*Backlight Timer*

the period of time to keep the backlight on

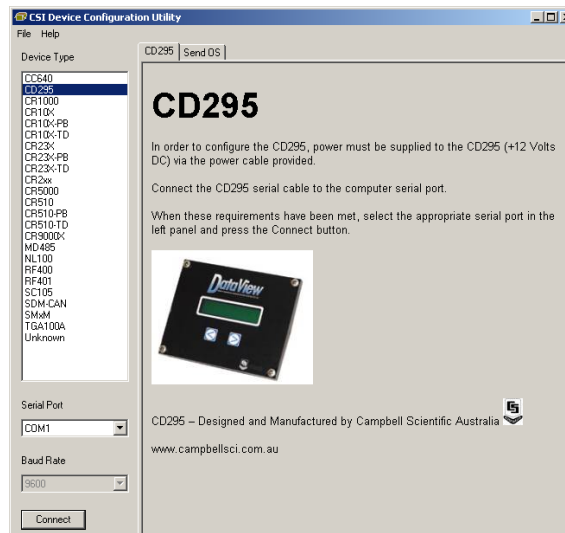
Before using *Device Configuration Utility*, it is important to provide power to your DataView II (CD295) and connect the serial port of your computer to the CD295, using the programming cable provided (see figure below).



## 4.2.1 Operation

### 4.2.1.1 Establishing a Connection

1. Start the *Device Configuration Utility*.
2. Select CD295 from the **Device Type** on the left-hand side of the window. Verify the **Serial Port** in the bottom left of the window is correct and click the **Connect** button.



3. *Device Configuration Utility* will automatically detect the connection speed and PakBus address of the DataView II. Once detection is complete, three tabs should appear in the window on the right-hand side. These are **Program Control**, **Send OS** and **Settings Editor**.

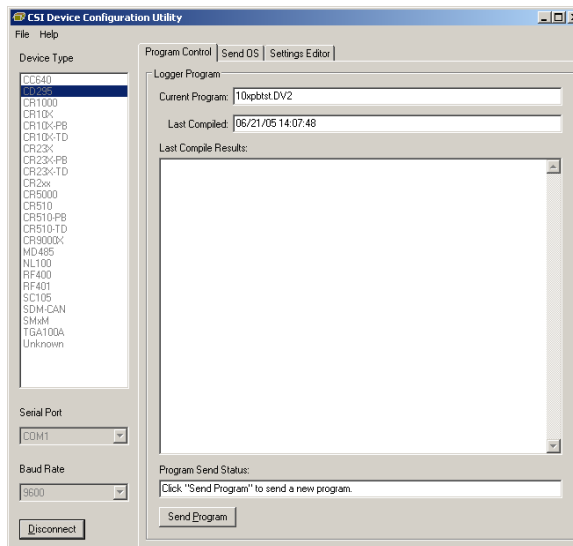
The **Program Control** tab is used to send a program to the DataView II, and is the most commonly used of the three tabs.

As the name suggests, the **Send OS** tab is used to send an Operating System (OS) to the DataView II. This is used to upgrade the firmware of the CD295.

The **Settings Editor** tab is used to read/modify the addresses and timers mentioned above.

#### 4.2.1.2 Downloading a Program

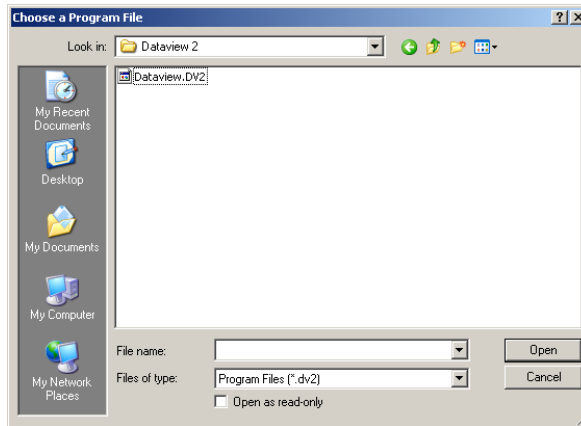
1. To download a program, ensure that you are already connected to the CD295 and the **Program Control** tab is selected. Click the **Send Program** button.



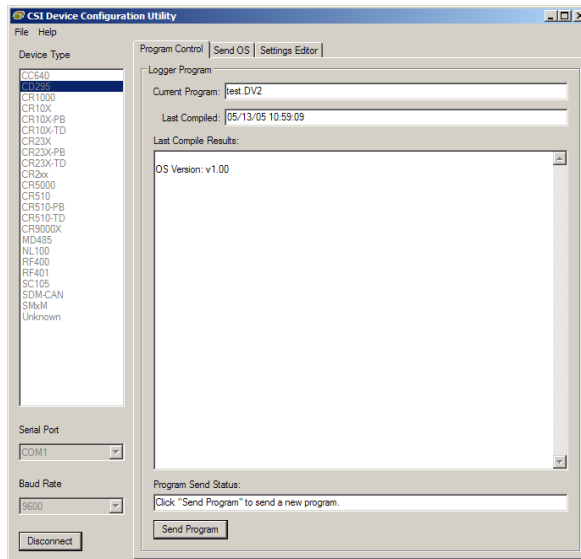
2. A file browser window will appear. Locate the DV2 file you wish to download and click **Open**.

**NOTE**

When a DataView II program is created, *PC295W* creates two files — the DV2 file for download to your DataView II, and a .295 file which contains internal configuration information for the *PC295W* program. You should only send the DV2 file to your CD295.



3. *Device Configuration Utility* will download your program to the DataView II and return to **Program Control**.





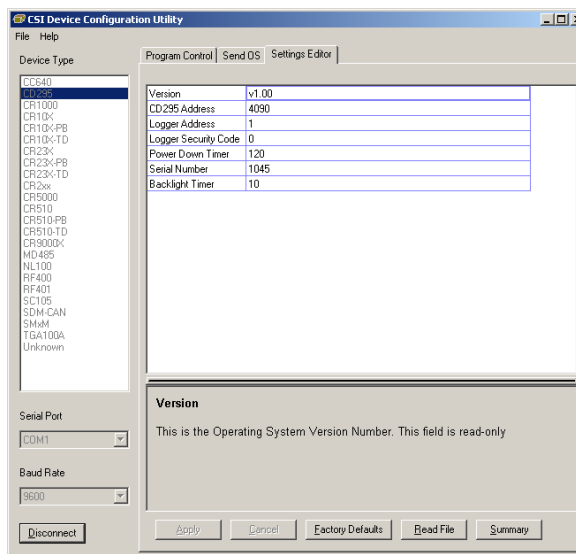
### 4.2.1.3 Modifying Settings

1. The **Settings Editor** tab allows you to read/modify any device-specific settings in the CD295. To change a setting, double-click the settings you wish to change, and type the new value. Repeat for as many settings as necessary.

**NOTE**

Some settings are read-only, and others have limits on the range of acceptable values. A description along with the maximum and minimum values appears in the comments box at the bottom of the window.

2. After all changes are complete, click **Apply** to send the new settings to the DataView II. After the settings are applied, *Device Configuration Utility* will show the new values of the Settings from the CD295.



3. If after editing a setting, you wish to discard the changes, click **Cancel**. *Device Configuration Utility* will show the current values of the settings in order for you to verify that the changes were discarded.
4. It is possible to return the DataView II to its factory default settings. To do this, click **Factory Defaults**.

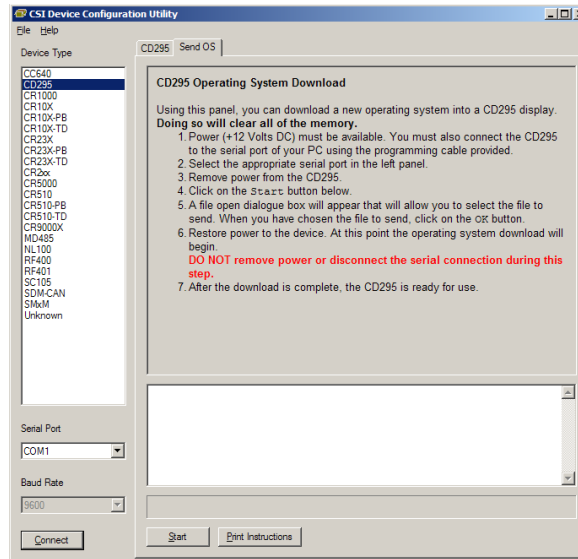
### 4.2.1.4 Upgrading the Operating System (OS)

From time to time, new operating system(s) for the DataView II may be released to correct errors in the operating system or to add new functionality. To take advantage of this, it is necessary to send the new operating system (OS) to the DataView II.

1. If you need to send an Operating System to your DataView2, open the **Send OS** tab in *Device Configuration Utility* and select the **Send OS** button at the bottom of the window.

**NOTE**

It is not necessary to “Connect” using *Device Configuration Utility* to send an operating system.

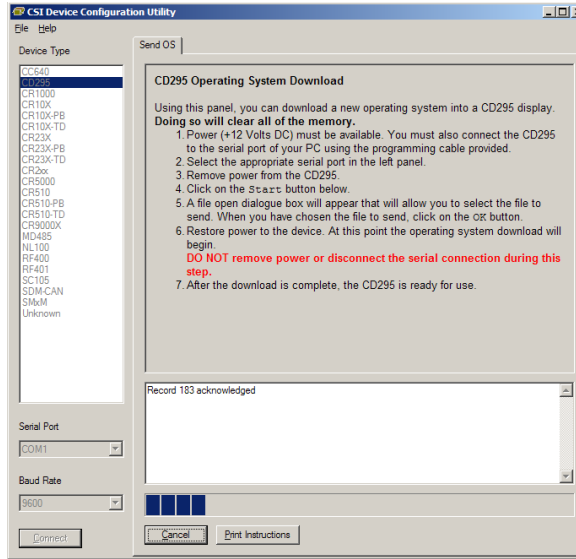


2. A file browser window will appear. Locate the operating system file (A43 extension), provided by your supplier, and click **Open**.
3. After selecting the operating system file, it will be necessary to power cycle the DataView II. Disconnect the power from the CD295 and reconnect it.

- The download will begin, and progress bar should begin to fill.

**CAUTION**

It is VERY important that the power cable and programming cable remain connected while the download is underway. Failure to do so may cause permanent damage to the CD295.



- When the download is complete, *Device Configuration Utility* will display a pop-up window to confirm the success or to notify if there was an error.



- Once the download is complete, disconnect power from the CD295 for at least 30 seconds to ensure that it has been completely reset. After this, the new operating system will run.

## 5. Mounting in Enclosure Door

If the DataView II will be exposed to the elements, it is important to fit the CD295 door kit, as explained below.

- Use the template provided to mark out the four mounting holes and cut-out for the CD295.
- Drill the four corner holes using a 4.5 mm drill and cut out the mounting hole using a jigsaw or nibbler.

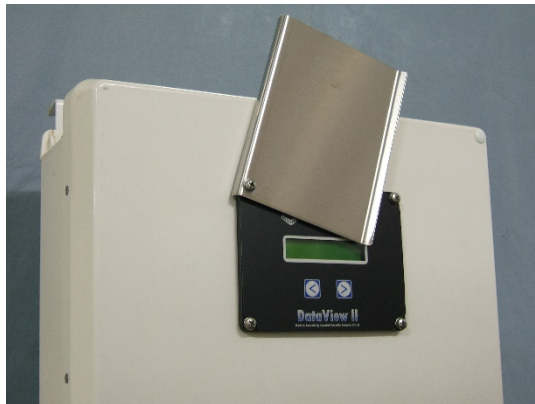
3. Apply a thin coating of neutral-cure silicon sealant between the flange of the CD295 and enclosure door.
4. Use the screws and nuts provided to attach the CD295. Insert the head of the screw followed by a flat washer through the front of the CD295. On the inside of the enclosure, fit the rubber O-ring washer then the second flat washer followed by the dome nut.
5. If fitted, remove the nut, bolt and washers from the top-left mounting hole of the CD295 front panel.
6. Remove the “nylock” nut, stainless steel and rubber washers from the bolt assembly fixed to the CD295 door. At this point, the bolt assembly holding tag should be exposed.
7. Insert the bolt assembly through the top-left mounting hole of the CD295 front panel
8. From the inside of the enclosure, fit the rubber washer, stainless steel washer and “nylock” nut onto the stainless steel bolt assembly.
9. After confirming that all hardware has been fitted in the correct order, tear off the “Bolt Assembly Holding Tag”.
10. Tighten the “nylock” nut until the black rubber washer is tightly compressed.

---

**NOTE**

If you are fitting the CD295 door kit, only three bolts are required to be fitted at this step. The bolt in the top-left corner of the CD295 front panel is **not required**. In this case, only fit the remaining three bolts, and use the longer (25 mm) bolt supplied in the door kit in the top-left hole. **Do not** over tighten as this will cause damage to rubber washer.

---



See Appendix A, *CD295 Door Kit Assembly Diagram (p. A-1)*, for the assembly diagram for the CD295 door kit.

## 6. Shipping Kit

The CD295 DataView II Shipping Kit includes:

- CD295 DataView II display
- CD295 programming cable
- *PC295W* software on CD
- CD295 Mounting Template
- 4 x stainless steel mounting screws, dome nuts, stainless steel and rubber washers

If the CD295 is to be mounted in the front door of an enclosure, the CD295 door kit will also be included. This kit includes:

- CD295 stainless steel door
- Stainless steel screw with nylon spacer, power and programming cables, rubber and stainless steel washers, and “nylock” nut
- CD295 door mounting diagram

## 7. Hardware

### SPECIFICATIONS

#### Physical

<b>Width:</b>	130 mm (5.1 in)
<b>Height:</b>	100 mm (3.9 in)
<b>Depth:</b>	30 mm (1.2 in)
<b>Weight:</b>	235 g (8 oz)

**Power Supply:** 8-16 VDC (12 V nominal)

#### Power Consumption (at 12 Vdc)

<b>Active with backlight:</b>	30 mA
<b>Active without backlight:</b>	3 mA
<b>Asleep:</b>	1 mA

#### Communications

<b>Physical protocol:</b>	RS232 DTE
<b>Network protocol:</b>	PakBus
<b>Configuration protocol:</b>	<i>Device Configuration Utility</i>

#### Environmental

##### Temperature

<b>Operating:</b>	-20 to 55 °C
<b>Asleep:</b>	-25 to 70 °C

**Humidity:** IP65 when mounted in enclosure door with supplied sealant.

**General**

<b>Number of screens:</b>	30 max
<b>Value update interval:</b>	1 – 65535 sec
<b>Backlight period:</b>	0 – 60 sec (default 10)
<b>Power down period:</b>	5 – 254 sec (default 120) (255 = never sleep)
<b>CD295 address:</b>	1 – 4094 (default 4090)
<b>Logger address:</b>	1 – 4094 (default 1)
<b>Description string:</b>	16 chars max
<b>Units string:</b>	8 chars max
<b>Decimals:</b>	0 – 6 digits after decimal

## 8. Problems

- **Symptom**

The DataView II displays “Waiting” in every location.

**Explanation**

This message indicates that the DataView requested a public variable from the data logger, but has not yet received a response.

**Things to check**

Is the DataView II connected to the data logger?

Check the serial cable from the DataView II to the data logger.

Does the data logger have power?

Check the power supply to the data logger.

Does the PakBus address of the data logger match the “Logger Address” in the CD295?

Using *Device Configuration Utility*, check that the “Logger Address” setting in the DataView II and the PakBus address of the data logger match (refer to your data logger manual).

Is the baud rate of the data logger RS-232 port set to 9600 or auto?

By default, the data logger serial port speed should be suitable for the CD295. If it has been manually changed, it may need to be adjusted.

Is this the right version of the DataView program for the data logger program?

It is important that the program that is running in the data logger is the same as the one used when the DataView II program was written. If not, then the DataView II program may need to be re-written.

Could the data logger be too busy to answer?

Consider the execution of the data logger program, and modify if necessary.

- **Symptom**

The DataView II displays “Waiting” in a few (but not all) screens.

**Explanation**

This message indicates that the DataView requested a public variable from the data logger, but has not yet received a response.

If some screens function correctly, then the data logger address, is correct, and the data logger is answering requests correctly.

**Things to check**

Is this the right version of the DataView program for the data logger program?

It is important that the program that is running in the data logger is the same as the one used when the DataView II program was written. If not, then the DataView II program may need to be re-written.

- **Symptom**

After sending a program to the DataView II, it displays “No program” and won’t show any of my screens.

**Explanation**

The “No program” message indicates that the current program in the DataView II is incomplete or incorrect.

No permanent harm is done by sending an incorrect file, however it will not execute.

**Things to check**

Did you download the correct file?

It is very important that you select the DV2 file that you created with *PC295W*, and not the 295 file which is only created for internal use by the *PC295W* software itself, or any other file on your computer.

Try downloading again.

Could your DV2 file be corrupt?

No software other than *PC295W* should be used to edit DV2 files. Even a slight change to the file is enough to cause the CD295 to reject the program.

Try recreating the DV2 file in *PC295W* and download it again.

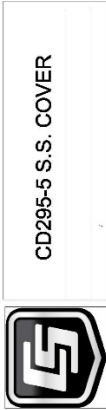
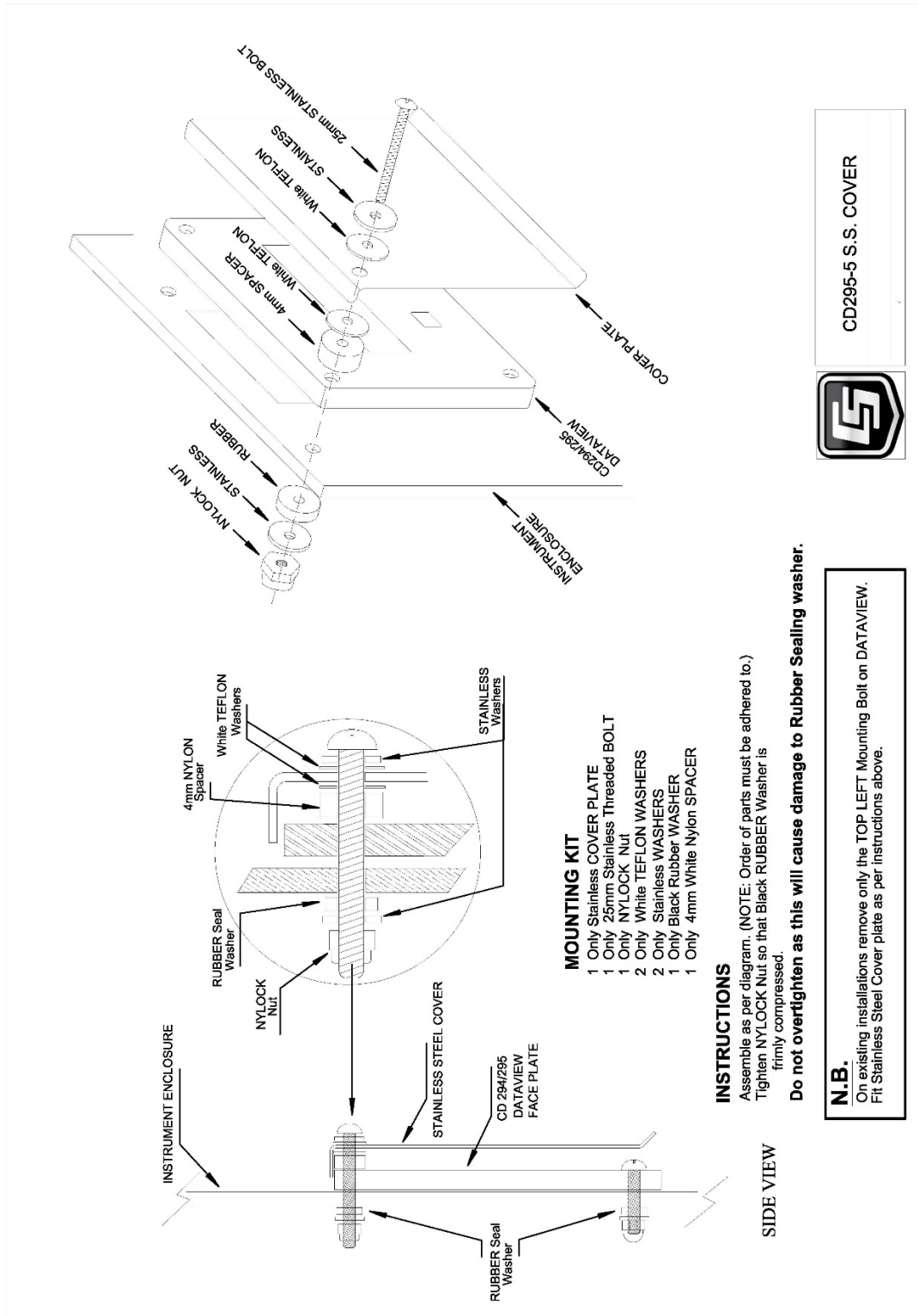
## **9. Temperature Extremes and LCD Adjustment**

The CD295 has been tested to  $-20$  °C. It will perform at this temperature although the display may be sluggish and dim.

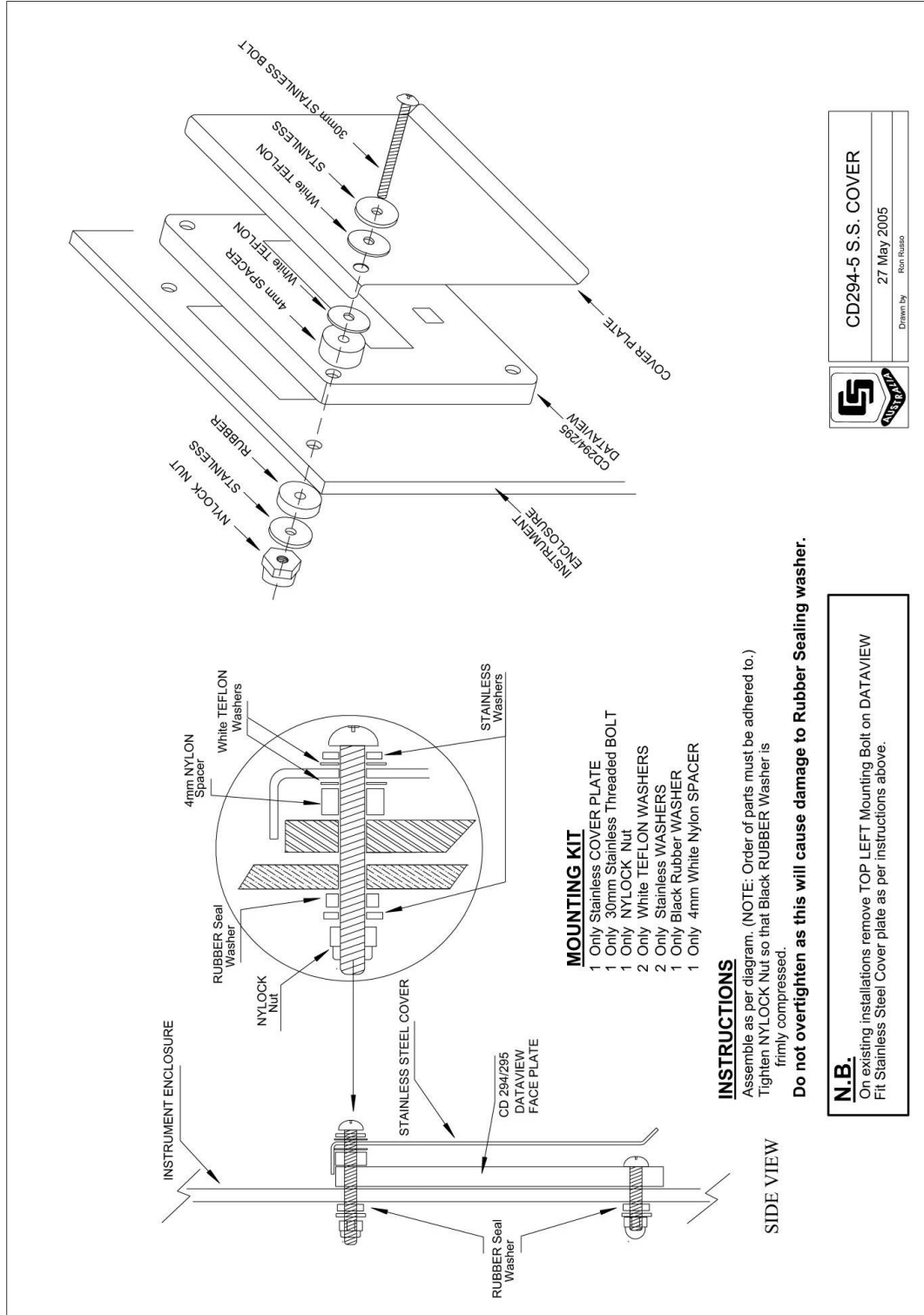
Under temperature extremes, the CD295 liquid crystal display (LCD) may become difficult to read. LCD contrast can be adjusted by inserting a small jeweler's screwdriver (preferably plastic) into the round hole on the back of the CD295 cover and adjusting the LCD contrast potentiometer.



# Appendix A. CD295 Door Kit Assembly Diagram



CD295-5 S.S. COVER



	CD294-5 S.S. COVER
	27 May 2005 <small>Drawn by: Ron Russo</small>

# Appendix B. CD295 Mounting Template

(NOT TO SCALE – REFER TO MOUNTING TEMPLATE SUPPLIED WITH CD295)

↑ ALIGN TOP OF PAGE WITH TOP EDGE OF ENCLOSURE ↑

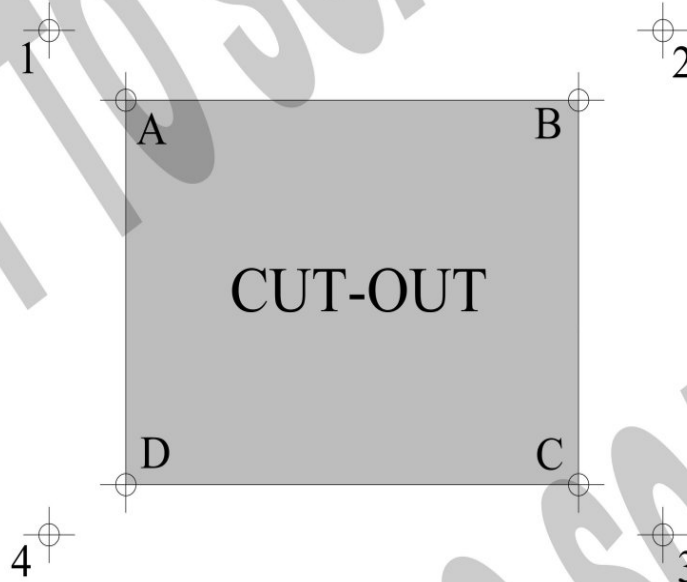
## DataView Mounting Template

### Package Contents

- CD294 DataView Display
- CD294 Programming Cable
- Mounting Template
- 4 x screws, washers, nuts and rubber washers.

### Package Contents

- CD295 DataView II Display
- CD295 Programming Cable
- CD295 Power cable
- Mounting Template
- 4 x screws, washers, nuts and rubber washers.



## WARNING

**It is highly recommended that the Stainless Steel Cover Plate is fitted to any installation where the DataView will be exposed to the elements—especially UV. Failure to do so may void warranty.**

1. Align the top of this mounting template with the top edge of the enclosure.
2. Using a sharp marker / scribe, accurately mark the enclosure through the template at all 8 Points.
3. Remove the template and draw lines to join the 4 inner points (A,B,C and D). This will indicate the section to be cut out.
4. Remove the "CUT-OUT" from the enclosure using the appropriate tools.
5. Drill the 4 outer points (1,2,3 and 4) using a 4mm drill bit.
6. Mount the DataView display and the Stainless Steel Cover Plate as per supplied diagram

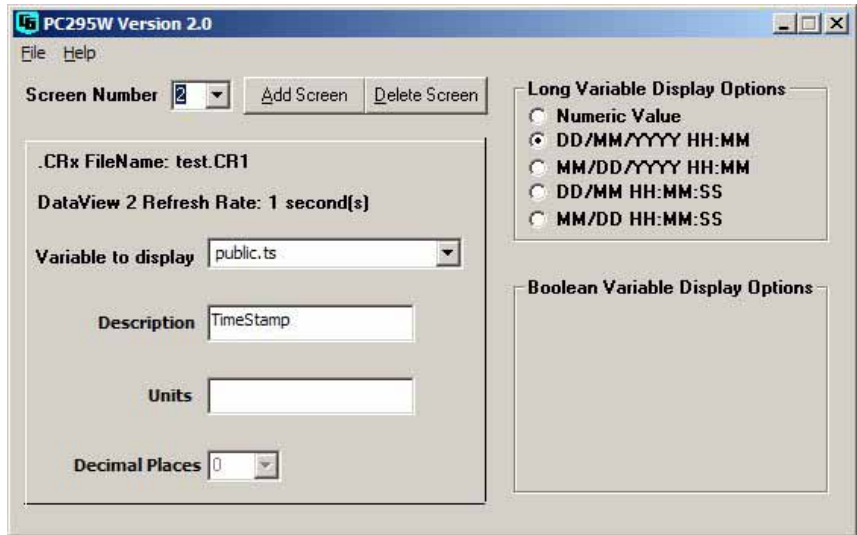
# Appendix C. Using Time Stamps

At the time of release of this document, the CRx000 series of data loggers do not support variables of a “date” type. Dates are currently recorded in a long integer as the number of seconds that have elapsed since 1/1/1990 00:00:00. The DataView II is capable of displaying these values in Gregorian Date format (i.e., Day, Month, Year, etc.) in a number of different representations.

Below is an example CR1000 program to record a timestamp for display on a CD295:

```
Public Time as Long
BeginProg
  Scan (1,Sec,0,0)
  Time = Public.TimeStamp(1,1)
  NextScan
EndProg
```

In this case, when creating the DataView program in *PC295W* for this variable, the user should select one of the date representations instead of **Numeric Value** as per the screenshot below:



In this case, the DataView II would display the time as below:

Timestamp  
24/01/2007 9:34

*Please note:* If this value is displayed using **Numeric Value**, the DataView II would show something like this:

Timestamp  
538479240

# ***Limited Warranty***

---

Products manufactured by Campbell Scientific are warranted by Campbell Scientific to be free from defects in materials and workmanship under normal use and service for twelve months from the date of shipment unless otherwise specified on the corresponding product webpage. See Product Details on the Ordering Information pages at [www.campbellsci.com](http://www.campbellsci.com). Other manufacturer's products, that are resold by Campbell Scientific, are warranted only to the limits extended by the original manufacturer.

Refer to [www.campbellsci.com/terms#warranty](http://www.campbellsci.com/terms#warranty) for more information.

**CAMPBELL SCIENTIFIC EXPRESSLY DISCLAIMS AND EXCLUDES ANY IMPLIED WARRANTIES OF MERCHANTABILITY OR FITNESS FOR A PARTICULAR PURPOSE. Campbell Scientific hereby disclaims, to the fullest extent allowed by applicable law, any and all warranties and conditions with respect to the Products, whether express, implied or statutory, other than those expressly provided herein.**

# Assistance

---

Products may not be returned without prior authorization.

Products shipped to Campbell Scientific require a Returned Materials Authorization (RMA) or Repair Reference number and must be clean and uncontaminated by harmful substances, such as hazardous materials, chemicals, insects, and pests. Please complete the required forms prior to shipping equipment.

Campbell Scientific regional offices handle repairs for customers within their territories. Please see the back page for the Global Sales and Support Network or visit [www.campbellsci.com/contact](http://www.campbellsci.com/contact) to determine which Campbell Scientific office serves your country.

To obtain a Returned Materials Authorization or Repair Reference number, contact your CAMPBELL SCIENTIFIC regional office. Please write the issued number clearly on the outside of the shipping container and ship as directed.

For all returns, the customer must provide a “Statement of Product Cleanliness and Decontamination” or “Declaration of Hazardous Material and Decontamination” form and comply with the requirements specified in it. The form is available from your CAMPBELL SCIENTIFIC regional office. Campbell Scientific is unable to process any returns until we receive this statement. If the statement is not received within three days of product receipt or is incomplete, the product will be returned to the customer at the customer’s expense. Campbell Scientific reserves the right to refuse service on products that were exposed to contaminants that may cause health or safety concerns for our employees.

# Safety

---

**DANGER** — MANY HAZARDS ARE ASSOCIATED WITH INSTALLING, USING, MAINTAINING, AND WORKING ON OR AROUND **TRIPODS, TOWERS, AND ANY ATTACHMENTS TO TRIPODS AND TOWERS SUCH AS SENSORS, CROSSARMS, ENCLOSURES, ANTENNAS, ETC.** FAILURE TO PROPERLY AND COMPLETELY ASSEMBLE, INSTALL, OPERATE, USE, AND MAINTAIN TRIPODS, TOWERS, AND ATTACHMENTS, AND FAILURE TO HEED WARNINGS, INCREASES THE RISK OF DEATH, ACCIDENT, SERIOUS INJURY, PROPERTY DAMAGE, AND PRODUCT FAILURE. TAKE ALL REASONABLE PRECAUTIONS TO AVOID THESE HAZARDS. CHECK WITH YOUR ORGANIZATION'S SAFETY COORDINATOR (OR POLICY) FOR PROCEDURES AND REQUIRED PROTECTIVE EQUIPMENT PRIOR TO PERFORMING ANY WORK.

Use tripods, towers, and attachments to tripods and towers only for purposes for which they are designed. Do not exceed design limits. Be familiar and comply with all instructions provided in product manuals. Manuals are available at [www.campbellsci.com](http://www.campbellsci.com). You are responsible for conformance with governing codes and regulations, including safety regulations, and the integrity and location of structures or land to which towers, tripods, and any attachments are attached. Installation sites should be evaluated and approved by a qualified engineer. If questions or concerns arise regarding installation, use, or maintenance of tripods, towers, attachments, or electrical connections, consult with a licensed and qualified engineer or electrician.

## General

- Protect from over-voltage.
- Protect electrical equipment from water.
- Protect from electrostatic discharge (ESD).
- Protect from lightning.
- Prior to performing site or installation work, obtain required approvals and permits. Comply with all governing structure-height regulations.
- Use only qualified personnel for installation, use, and maintenance of tripods and towers, and any attachments to tripods and towers. The use of licensed and qualified contractors is highly recommended.
- Read all applicable instructions carefully and understand procedures thoroughly before beginning work.
- Wear a **hardhat** and **eye protection**, and take **other appropriate safety precautions** while working on or around tripods and towers.
- **Do not climb** tripods or towers at any time, and prohibit climbing by other persons. Take reasonable precautions to secure tripod and tower sites from trespassers.
- Use only manufacturer recommended parts, materials, and tools.

## Utility and Electrical

- **You can be killed** or sustain serious bodily injury if the tripod, tower, or attachments you are installing, constructing, using, or maintaining, or a tool, stake, or anchor, come in **contact with overhead or underground utility lines**.
- Maintain a distance of at least one-and-one-half times structure height, 6 meters (20 feet), or the distance required by applicable law, **whichever is greater**, between overhead utility lines and the structure (tripod, tower, attachments, or tools).
- Prior to performing site or installation work, inform all utility companies and have all underground utilities marked.
- Comply with all electrical codes. Electrical equipment and related grounding devices should be installed by a licensed and qualified electrician.
- Only use power sources approved for use in the country of installation to power Campbell Scientific devices.

## Elevated Work and Weather

- Exercise extreme caution when performing elevated work.
- Use appropriate equipment and safety practices.
- During installation and maintenance, keep tower and tripod sites clear of un-trained or non-essential personnel. Take precautions to prevent elevated tools and objects from dropping.
- Do not perform any work in inclement weather, including wind, rain, snow, lightning, etc.

## Maintenance

- Periodically (at least yearly) check for wear and damage, including corrosion, stress cracks, frayed cables, loose cable clamps, cable tightness, etc. and take necessary corrective actions.
- Periodically (at least yearly) check electrical ground connections.

## Internal Battery

- Be aware of fire, explosion, and severe-burn hazards.
- Misuse or improper installation of the internal lithium battery can cause severe injury.
- Do not recharge, disassemble, heat above 100 °C (212 °F), solder directly to the cell, incinerate, or expose contents to water. Dispose of spent batteries properly.

WHILE EVERY ATTEMPT IS MADE TO EMBODY THE HIGHEST DEGREE OF SAFETY IN ALL CAMPBELL SCIENTIFIC PRODUCTS, THE CUSTOMER ASSUMES ALL RISK FROM ANY INJURY RESULTING FROM IMPROPER INSTALLATION, USE, OR MAINTENANCE OF TRIPODS, TOWERS, OR ATTACHMENTS TO TRIPODS AND TOWERS SUCH AS SENSORS, CROSSARMS, ENCLOSURES, ANTENNAS, ETC.



## Global Sales & Support Network

A worldwide network to help meet your needs



### Campbell Scientific Regional Offices

#### Australia

**Location:** Garbutt, QLD Australia  
**Phone:** 61.7.4401.7700  
**Email:** [info@campbellsci.com.au](mailto:info@campbellsci.com.au)  
**Website:** [www.campbellsci.com.au](http://www.campbellsci.com.au)

#### Brazil

**Location:** São Paulo, SP Brazil  
**Phone:** 11.3732.3399  
**Email:** [vendas@campbellsci.com.br](mailto:vendas@campbellsci.com.br)  
**Website:** [www.campbellsci.com.br](http://www.campbellsci.com.br)

#### Canada

**Location:** Edmonton, AB Canada  
**Phone:** 780.454.2505  
**Email:** [dataloggers@campbellsci.ca](mailto:dataloggers@campbellsci.ca)  
**Website:** [www.campbellsci.ca](http://www.campbellsci.ca)

#### China

**Location:** Beijing, P. R. China  
**Phone:** 86.10.6561.0080  
**Email:** [info@campbellsci.com.cn](mailto:info@campbellsci.com.cn)  
**Website:** [www.campbellsci.com.cn](http://www.campbellsci.com.cn)

#### Costa Rica

**Location:** San Pedro, Costa Rica  
**Phone:** 506.2280.1564  
**Email:** [info@campbellsci.com](mailto:info@campbellsci.com)  
**Website:** [www.campbellsci.com](http://www.campbellsci.com)

#### France

**Location:** Vincennes, France  
**Phone:** 0033.0.1.56.45.15.20  
**Email:** [info@campbellsci.fr](mailto:info@campbellsci.fr)  
**Website:** [www.campbellsci.fr](http://www.campbellsci.fr)

#### Germany

**Location:** Bremen, Germany  
**Phone:** 49.0.421.460974.0  
**Email:** [info@campbellsci.de](mailto:info@campbellsci.de)  
**Website:** [www.campbellsci.de](http://www.campbellsci.de)

#### India

**Location:** New Delhi, DL India  
**Phone:** 91.11.46500481.482  
**Email:** [info@campbellsci.in](mailto:info@campbellsci.in)  
**Website:** [www.campbellsci.in](http://www.campbellsci.in)

#### South Africa

**Location:** Stellenbosch, South Africa  
**Phone:** 27.21.8809960  
**Email:** [sales@campbellsci.co.za](mailto:sales@campbellsci.co.za)  
**Website:** [www.campbellsci.co.za](http://www.campbellsci.co.za)

#### Spain

**Location:** Barcelona, Spain  
**Phone:** 34.93.2323938  
**Email:** [info@campbellsci.es](mailto:info@campbellsci.es)  
**Website:** [www.campbellsci.es](http://www.campbellsci.es)

#### Thailand

**Location:** Bangkok, Thailand  
**Phone:** 66.2.719.3399  
**Email:** [info@campbellsci.asia](mailto:info@campbellsci.asia)  
**Website:** [www.campbellsci.asia](http://www.campbellsci.asia)

#### UK

**Location:** Shepshed, Loughborough, UK  
**Phone:** 44.0.1509.601141  
**Email:** [sales@campbellsci.co.uk](mailto:sales@campbellsci.co.uk)  
**Website:** [www.campbellsci.co.uk](http://www.campbellsci.co.uk)

#### USA

**Location:** Logan, UT USA  
**Phone:** 435.227.9120  
**Email:** [info@campbellsci.com](mailto:info@campbellsci.com)  
**Website:** [www.campbellsci.com](http://www.campbellsci.com)