

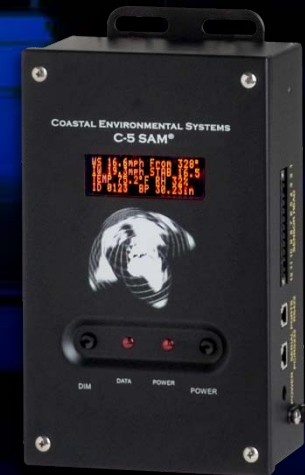


**COASTAL**  
ENVIRONMENTAL SYSTEMS

**C-5 SAM™ Weather Command  
Training Guide**



# C-5 SAM™ Weather Command Emergency Response Weather Station Training Guide



**Coastal Environmental Systems, Inc.**

820 First Avenue South • Seattle, WA 98134  
206.682.6048 • 800.488.8291 • 206.682.5658 Fax  
[www.CoastalEnvironmental.com](http://www.CoastalEnvironmental.com)



## C-5 SAM™ is built for Emergency Responders

The C-5 SAM™ Weather Station provides on-site, real time, reliable weather data for permanent or mobile deployments. It is a rugged, professional quality, yet inexpensive, weather station.

If you respond to a limited number of hazmat calls, have a low potential for a truly catastrophic spill, and/or are on a limited budget, then the C-5 SAM™ is the right station for you.





## C-5 SAM™ Features:

- Heavy Duty Sensor Head and Mount
- Constructed of “Non Sparking” 6061-T6 Aluminum
- RM Young Wind Monitor
- Air Temperature and Humidity Sensor and Radiation Shield
- Barometer (in Display)
- Hand-held Compass
- Vacuum Fluorescent Display





# System Components: Sensor Head



**Wind Monitor –  
Propeller-Style**

**Temperature &  
Humidity Sensors are  
under the Radiation  
Shield**

**Power & Data Cable**

**Mount with a Knob to  
Screw onto a Tower or  
Vehicle Mount**



## System Components: Sighting Compass

C-5 SAM™ comes with a hand-held sighting compass.

This allows you to easily align the sensor head N arrow to True North.

Failure to do a correct alignment will result in incorrect data.





## System Components: Receiver/Display Box

Data displayed...

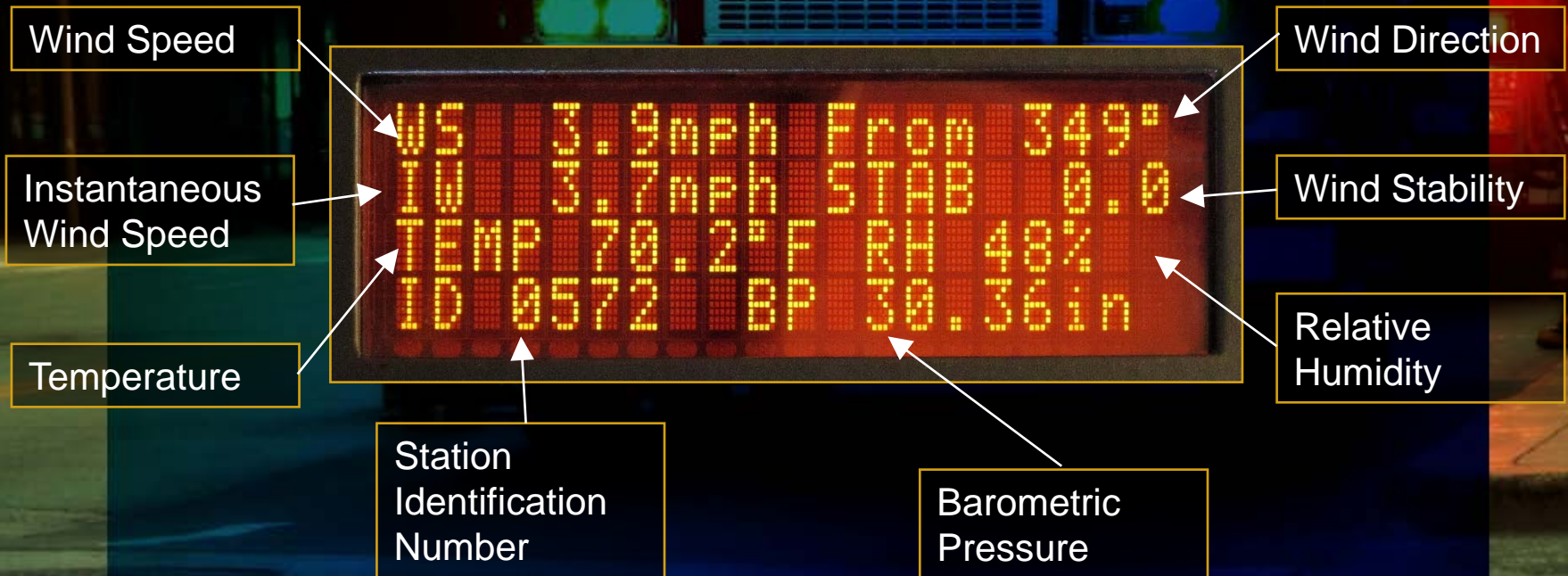
- 5-Minute wind speed & direction
- Air temperature
- Relative humidity
- Barometric pressure





## System Components: Receiver/Display Box

The Receiver/Display is also the interface with the PC and plume dispersion modeling software.





# Display: Screen Data Explanation

<b>Wind Speed (WS)</b>	5 minute running average (see details below) in mph or m/s
<b>Wind Direction</b>	5 minute running average of direction wind is coming “from” in degrees or ordinal points (N, W, SW, etc.); see the table that translates ordinal points to degrees
<b>Instantaneous Wind Speed (IW)</b>	Exact wind speed during last one second before updating display (see details below)
<b>Stability (STAB)</b>	Value describing how much wind “mixing” is occurring within the wind direction (see details below)
<b>Temperature (TEMP)</b>	5 minute running average of air temperature in °F or °C
<b>Relative Humidity (RH)</b>	5 minute running average in percentage
<b>Identification (ID)</b>	Your C-5 SAM™ unit identification (assigned at the factory)
<b>Barometric Pressure (BP)</b>	Average barometric pressure in inHg (inches of Mercury)





## Set-up / Siting Considerations

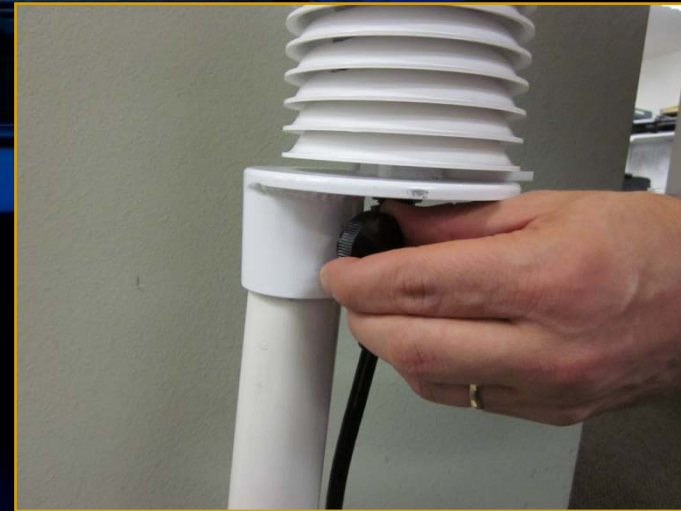
- **Compass Measurements** – The C-5 SAM™ has a hand-held compass for alignment to North. Like all compasses, it will be affected if located near (laterally) large steel objects (i.e. on top of a van is OK, but next to it is not an ideal location). Try to place the C-5 SAM™ at least 30 meters from large vehicles, cranes, etc.
- **Wind Measurements** – Select as exposed a site as possible. The wind pattern around a building or other obstacle is disturbed for a considerable distance – try to get the C-5 SAM™ away from that object.



## Set-up / Assembly Sensor Head

Attach the sensor head to an existing pole or the bulkhead mount.

Screw down the sensor head using the black knob.





## Set-up / Assembly Cable to the Display

Line up the terminal strip to the connector port on the side of the C-5 SAM™ display

Also, plug in the power cable to the display and to a 110 outlet

Plug the green terminal strip into the display

A cable is run from the RJ connector on the display to a serial port of a computer





## Connecting to Computer

- Plug the Display box power cord into a power source (110V unless otherwise marked).
- Plug one end of the serial data cable into the computer COM port.
- Turn the Receiver switch on.
- The Receiver power indicator light should now be on.
- With the C-5 SAM™ assembled and running, the “Data” light should blink briefly every 30 seconds. If the light doesn’t blink, refer to the section on troubleshooting.
- In the event your computer does not have a Serial Port available, you must employ a “Serial to USB” converter. These devices are inexpensive and readily available from most computer retailers.



# Maintenance

## **Periodic Maintenance Schedule**

Routine maintenance is required on the C-5 SAM™ every 12 months. This maintenance is to ensure that the system and its sensors are working and performing to specifications. In addition, the entire C-5 SAM™ should be examined for other damage.



# Troubleshooting

**Do not take the C-5 SAM™ or the Display box apart...**

This will void the warranty. If the procedures below do not solve the problem, call Coastal Environmental Systems' Service Department at 800-488-8291 x 157.



# Troubleshooting

## Is the Receiver/Display box on?

The Display backlight should be on and the Display characters visible. If this does not occur, do the following:

- Be sure the Receiver/Display is plugged in and turned on.
- Check the power light on the front panel. It should be lit.
- If the power light is not lit, check for power at the outlet where the Receiver/Display is plugged in.





# Troubleshooting

## Data light not flashing?

Every 30 seconds, the data light will flash, signifying the C-5 SAM™ is updating the display. If the light does not flash, then do the following:

- Be sure the Receiver/Display is plugged in and turned on.
- Check the power light on the front panel, it should be lit.







# Troubleshooting

## The Computer

There is data on the Display, but there is either no data, or erroneous data, at the computer.

- Check all the connections from the Receiver/Display to the computer.

## Error messages while running plume dispersion model

These are not related to the use of the C-5 SAM™. They are messages from the plume dispersion modeling software or your computer's operating system.

- Consult the EPA web site <https://www.epa.gov/cameo> for CAMEO®/ALOHA® support.
- Contact Coastal. We are not CAMEO®/ALOHA® experts or certified trainers, but we may be able to help.



## Please... Read the User's Manual!

- This presentation is intended to provide a quick overview of the C-5 SAM™. It is not intended to provide all the information necessary for the proper use and maintenance of the system. The User's Manual provides a great deal more information and a level of detail not available in this presentation.
- A printed copy of the User's Manual was shipped with the C-5 SAM™. It is also available in a separate file on this disk, in Adobe® PDF format.
- Should you discover contradictory statements or information, consider the Manual as the correct and final source.
- If you do find a discrepancy, or have a suggestion on how to make this presentation more useful, please contact the Coastal Environmental Systems Sales Dept. at 800-488-8291.



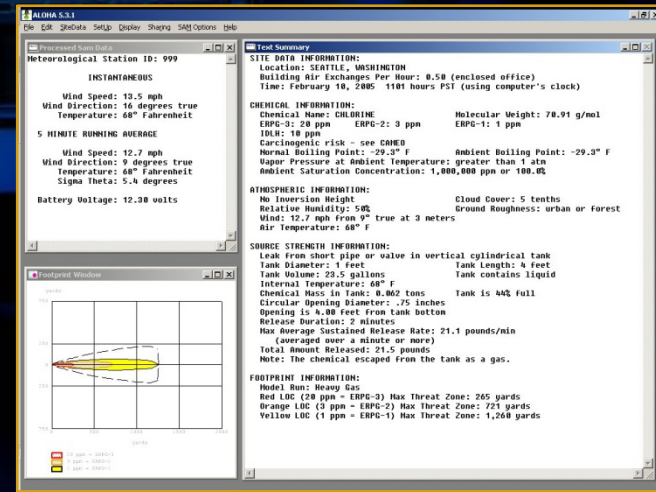
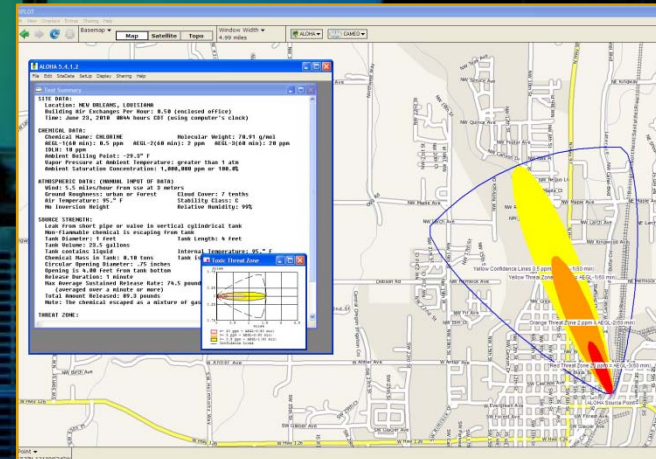
# Optional Vehicle Mount





# ALOHA® and MARPLOT® Screens

- The C-5 SAM™ measures air temperature, relative humidity, wind speed and direction, and barometric pressure every second.
- The resulting data is used to automatically compute the stability class of the wind and 5-minute running averages of wind speed, direction, and temperature. Every 30 seconds this data is transmitted to the Receiver/Display box and then output to your computer... automatically updating the plume dispersion modeling software.





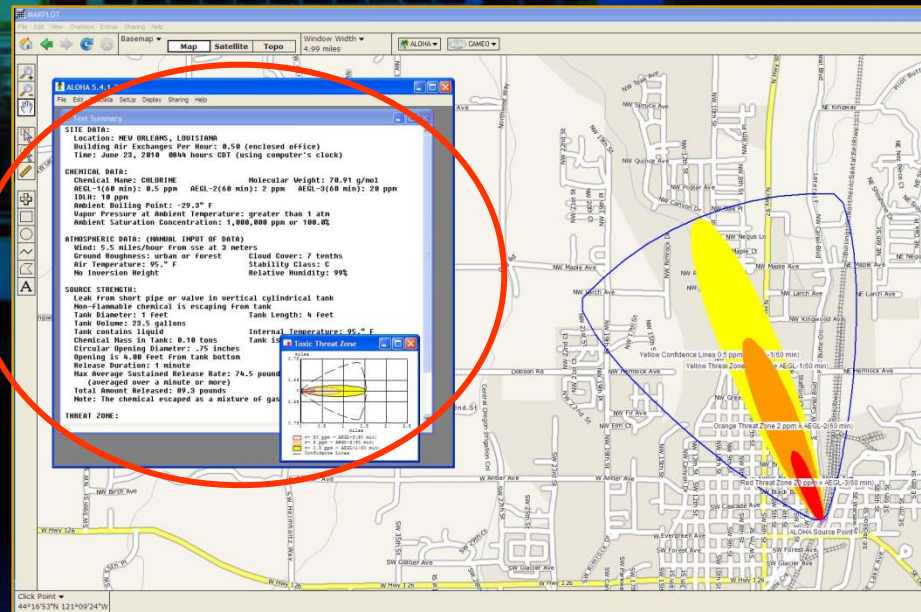
# ALOHA® and MARPLOT® Screens

## Important Note:

When using the C-5 SAM™ with ALOHA® & MARPLOT®, the ALOHA® application must be running in a window in front of MARPLOT®. The plume dispersion diagram on MARPLOT® will not update every 30 seconds unless the ALOHA® application window is on top.

Resize the ALOHA® window and move it to an area of the screen where the plume dispersion diagram will not be obscured.

While it is advisable to resize the ALOHA® window, do not make it so small that it might be inadvertently “lost” behind the MARPLOT® window.





**COASTAL**  
ENVIRONMENTAL SYSTEMS

**C-5 SAM™ Weather Command  
Training Guide**

# C-5 SAM™ Weather Command A Final Note

At Coastal Environmental Systems, Inc., we are very proud of the C-5 SAM™ and the service it has provided to the hazmat response community, both civilian and military.

Be assured your C-5 SAM™ has been designed and built to the highest standard and will provide many years of quality service.

**If we can be of further assistance, please do not hesitate to call us at 800-488-8291.**

**Service x 157**

**Coastal Environmental Systems, Inc.**

820 First Avenue South • Seattle, WA 98134  
206.682.6048 • 800.488.8291 • 206.682.5658 Fax  
[www.CoastalEnvironmental.com](http://www.CoastalEnvironmental.com)

