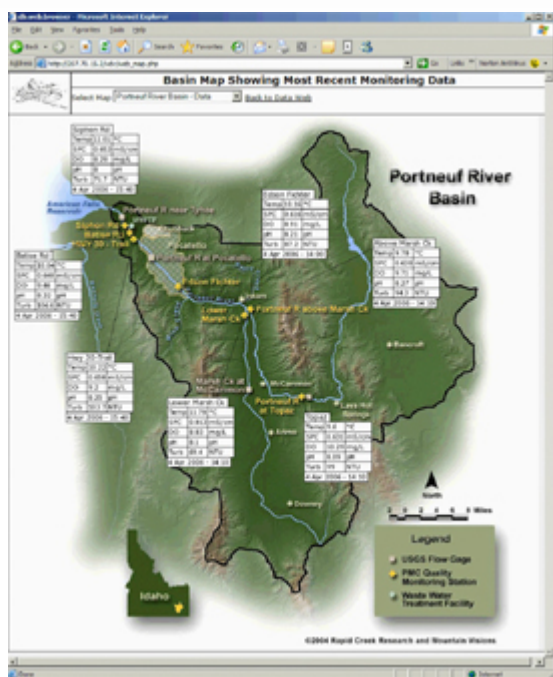




Idaho: Identifying Water-Quality Factors

Monitoring program assesses and documents the influence of natural and human-caused factors



The monitoring program for the Portneuf River Basin enables stakeholders to assess and document the influence of natural and human-caused factors on water quality. The program is a cooperative effort of private industry, educational institutions, scientists, and government agencies at numerous levels:

- Center for Ecological Research, Idaho State University
- City of Pocatello
- Idaho Department of Agriculture
- Idaho Department of Environmental Quality
- Idaho Department of Fish and Game
- Portneuf Soil and Water Conservation District
- Shoshone-Bannock Tribe
- Three Rivers RC&D Council, Inc.
- U.S. Environmental Protection Agency

James T. Brock of Rapid Creek Research, the implementing contractor, said, "We have been very impressed with the functionality of the VDV software. I have no doubt that the Vista product range should be able to address most of the needs of our customer."

Data from seven measuring stations is stored in the Portneuf River Basin VDV database system. Data originate from Campbell Scientific data loggers.

Case Study Summary

Application

Monitoring water quality

Location

Idaho

Products Used

VDV

Contributors

Vista Engineering

Participating Organizations

Idaho State University, City of Pocatello, State of Idaho, Portneuf Soil and Water Conservation District, Shoshone-Bannock Tribe, Three Rivers RC&D Council, U.S. Environmental Protection Agency

Measured Parameters

temperature, specific conductivity, dissolved oxygen, ph, turbidity

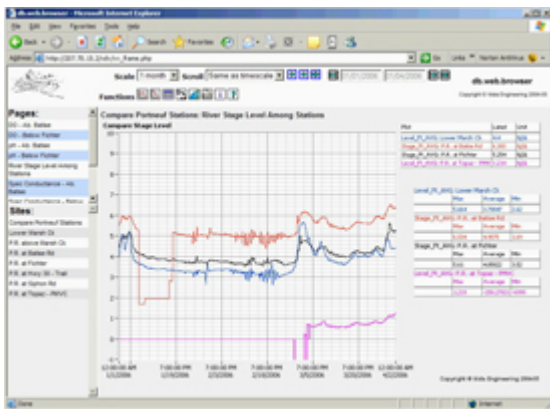
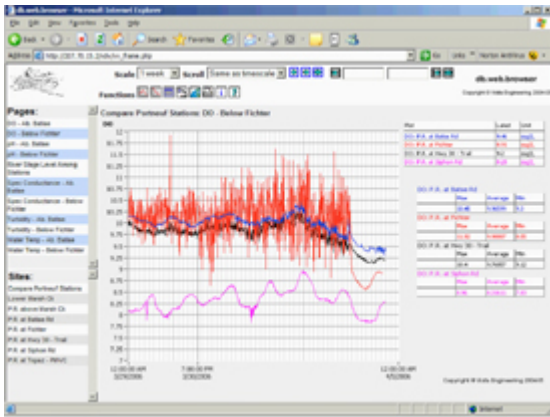
Controlled Devices

Seven measuring stations with water flow and water quality measurement sensors

Related Website

[Portneuf River Basin](#)

The Portneuf River Basin program runs Vista Data Vision applications for their logged data, database storage, displaying data to the web for its users, and for reporting.



View online at: www.campbellsci.com/idaho-water-quality-factors



Campbell Scientific, Inc. | 815 W 1800 N | Logan, UT 84321-1784 | (435) 227-9120 | www.campbellsci.com
AUSTRALIA | BRAZIL | CANADA | CHINA | COSTA RICA | FRANCE | GERMANY | INDIA | SOUTH AFRICA | SPAIN | THAILAND | UK | USA

© 2020 Campbell Scientific, Inc. | 03/24/2020